

Construction sites

Continuously switching off the mains power supply that is connected to emergency light fittings during the construction phase of an installation will cause these fittings to discharge and charge their batteries many times over a short period; this can shorten life of the battery. ABB does not recommend such practices and

may not honour the warranty on batteries when they are subjected to such harsh operating conditions. Emergency light fittings are designed to be discharge tested once every 6 months as per AS/NZS 2293.2, subjecting the product to repeated discharge or charge cycles is regarded as an abuse of the fittings.

Troubleshooting guide

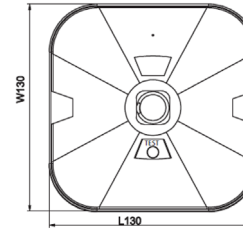
If you have installed and connected the fitting as per the instructions listed earlier and it does not function correctly, use the following table as a guide to fixing the problem. Look up the type of fault in the left column and check the possible causes from the right column.

If the fitting still does not work after checking these possible causes, contact ABB customer service in Australia on 1800 60 20 20.

No.	Fault	Possible causes
1	LED light source and indicating LED not lit	AC supply not connected; or AC supply turned off; or Test switch damaged
2	LED light source does not switch to emergency mode when the test button is pressed	Test switch damaged; or Battery not connected or faulty
3	LED light source works momentarily on emergency when the test button is pressed	Battery not yet charged (allow up to 24 hours)

INSTALLATION MANUAL

Stanilite® Economy Spitfire® LED surface mounted Standard



This document covers	What's inside the box
Safety warning	Accessory kit
Installation instructions	Installation manual
Removal instructions	Warranty information
Testing precautions	
Troubleshooting guide	

Thank you for choosing ABB product

Please read this document thoroughly before commencing installation and retain for future reference. Contact ABB customer service in Australia on 1800 60 20 20 if you need any assistance. The installation instructions were correct at the time of print. To reflect changes in technology and Australian standards; ABB reserves the right to amend the instructions without notice. Updated document can be found on the Stanilite website.

Safety warning

In Australia and New Zealand, only licensed electricians are permitted by law to work with 240 volt electrical installations. Do not attempt to install or connect this product unless you are a licensed electrician. Turn off and isolate the electrical supply before connecting this fitting to the building wires. Do not touch the terminals of the terminal block when the light fitting is energised. The only user-serviceable part is battery pack. LED light source is not user-serviceable. Do not attempt to service other parts of the fitting as this will void the warranty. As the installer, it is your responsibility to ensure compliance with all relevant building and safety

codes, (ie: AS/NZS 3000, AS/NZS 2293). Refer to the applicable standards for mains cabling installation procedures and requirements.

Important to note:

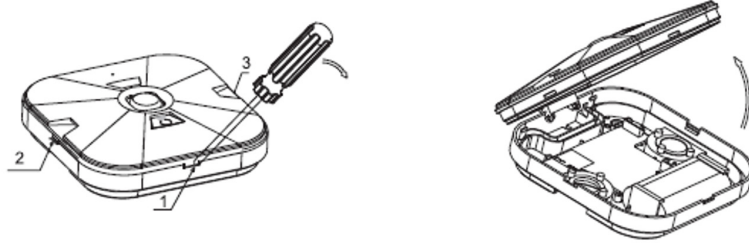
- For electronic control fitting such as this fitting (when supplied) do not megger between A and N.
- The product must be maintained and operated in accordance with the manufacturer's instructions, failure to do so may damage the product. It is recommended that this important note be communicated to the site owner or manager and or contractor of the installation at the time of site commissioning.
- This product is designed for indoor use only.

ABB Australia Pty Limited

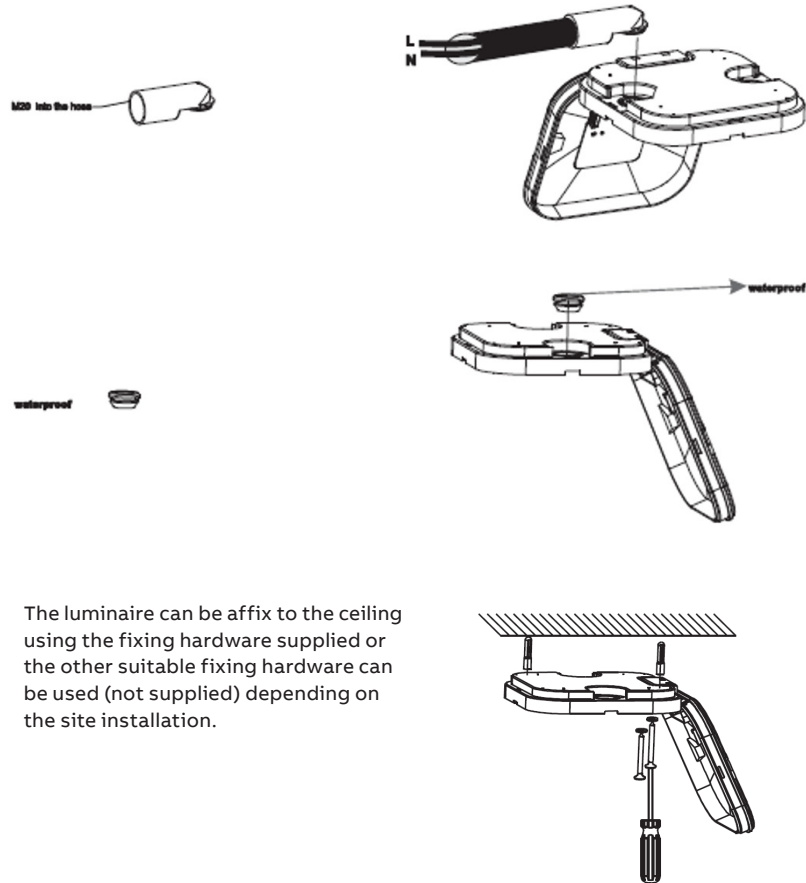
For enquiries
ABB contact centre: 1800 60 20 20
E-mail: AU-ABB-Stanilite@abb.com

Installation instructions

1. **Note: The circuit supplying mains power to the fitting must not be energised until installation of the fitting is completed.**
2. Open the top cover using slotted screwdriver through 3 holes as shown.

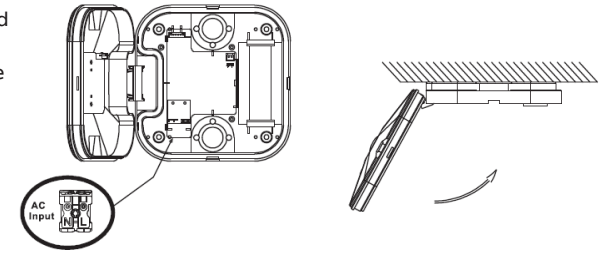


3. AC mains wiring to the luminaire can be done via the M20 flexible soft adaptor to the base or via the snap on cable grommet supplied with the product.



The luminaire can be affixed to the ceiling using the fixing hardware supplied or the other suitable fixing hardware can be used (not supplied) depending on the site installation.

This luminaire is a class II, non-maintained emergency luminaire and only requires mains active and neutral wiring. Close the top cover after mains wiring.



4. When the mains supply to the fitting is energised the green indicator LED located on the lamp head should illuminate. As this product is non-maintained, the emergency LED will not illuminate unless there is a power failure, or the test button is pressed. If the charging indicator LED does not illuminate, then check that the battery and lamp head cables are properly plugged into the main mother board, and refer to the troubleshooting guide at the end of this document.
5. Once the fitting has been energised for a few minutes, the emergency operation can be checked by pressing the test button on the lamp head. When the test button is pressed, the emergency LED in the centre of the lamp head should illuminate (it may illuminate for a few seconds only, depending on the state of the charge of the battery). If the lamp does not illuminate, check the lamp head cable is properly plugged into the main control unit and refer to the troubleshooting guide at the end of this document.

Important: 24 hours is required to allow the fitting battery to reach full capacity, ie: prior to a discharge test. As the installer, it is your responsibility to conduct the initial discharge testing of the installed fitting. Refer to AS/NZS 2293.

Important: As the installer, it is your responsibility to conduct the initial discharge testing of the installed fitting. Refer to the testing precautions section of this document and to AS/NZS 2293. Also refer to the construction sites section of this document for issues pertaining to emergency lighting during the construction phase of a building where permanent mains supply may not be available.

Removal instructions

1. Before removing the installed Spitfire, switch off the mains supply to the Spitfire.
2. Open the top cover using slotted screwdriver through 3 holes.
3. Disconnect active and neutral wires from the terminal block and then undo the affix hardware to remove luminaire from the ceiling.

Testing precautions

Once the fitting is permanently connected to the mains supply, a commissioning discharge test as required in AS/NZS 2293.3 must be carried out. You will need to allow 24 hours for the battery to fully charge prior to conducting this test, presently (at the time of writing), the standard requires that fittings operate in emergency mode for a period not less than 2 hours for their commissioning test and for not less than 90 minutes thereafter (it is required that 6 monthly discharge tests be carried out). You will need to keep the records for the commissioning test and enter them into the building emergency services logbook or via other recording methods as allowed by AS/NZS 2293.3.