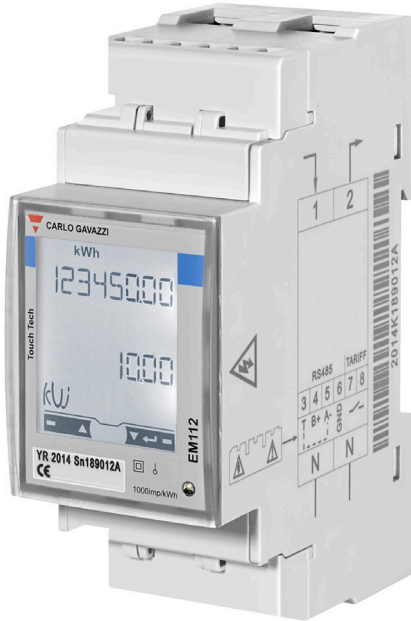


EM112DINAV01XS1X

Carlo Gavazzi EM11 EM112 Direct Connect Meter 100A 2 Din plus RS485



SINGLE PHASE ENERGY METERS



Component type	Multifunction energy meter
Range	EM111
Model	N/A
Product status	Existing

The Carlo Gavazzi EM11 Direct Connect energy meter range offers an economical solution for single-phase energy monitoring in various settings, including commercial and industrial applications. Its compact design and easy installation enable seamless integration within a load centre or panel board. Its features of remote monitoring through Modbus or pulse output options make it a cost-effective solution for single load/phase monitoring.

ELECTRICAL

Nominal current (In)	5.0 A
Sampling frequency	4096.0 Hz
Rated insulation voltage Ui	4000.0 V
Pulse counter	No
Refresh time	1.0 s
Type of display	LCD

COMMUNICATION

Tariff type	Two-tariff
Supporting protocol for Modbus	Yes
Supporting protocol for other bus systems	No

CONSTRUCTION

Display	8 digits
Terminal type	Screw
Mounting method	DIN rail
Material housing	Nylon

DIMENSIONS

Height	90.0 mm
Width	35.0 mm
Depth	63.0 mm
Weight	0.16 kg

ENVIRONMENT

Operating temperature	-25 - 55 °C
Storage temperature	-30 - 80 °C