

# Stanilite®

# Product selection guide

Emergency and exit lighting



[nhp.com.au](http://nhp.com.au)



1300 NHP NHP



[sales@nhp.com.au](mailto:sales@nhp.com.au)

DISTRIBUTED BY

**NHP**

# Table of contents

Introduction	2
Economy Range	8
Signature Range	20
Platinum Range	25
Emergency Lighting Spacing Table	74

# Stanilite®

## Leading the way in emergency lighting technology

Stanilite® is a leading life safety solutions provider, delivering state-of-the-art systems and products into the emergency lighting marketplace. Our products and services are specifically designed to provide the most effective protection and safety, in line with customer needs, relevant industry standards and regulations.

The Stanilite® concept is clear and simple. Providing you a reliable, total solution for safe evacuation. The way we do this is what makes the difference:

### Ease of installation with modular design

Many of our products are engineered to a modular design format, which promotes straightforward, cost-effective installation and maintenance. Modular design enables first-fix installation of the key wiring components with later connection of gear trays, diffusers and edgelit etc, for easy management and replacement of parts.

### Single box solution

A wide range of pictograph solutions included in the one box.

### Quickfit®

The Quickfit® range employs LED technology offering unsurpassed light source performance and longevity. Coupled with pulsetime control of battery charging, which maximises battery life, the result is exceptional efficiency. Compatible with existing Quickfit® mounting brackets and available in a frame-only configuration which will accept existing Quickfit® diffusers, upgrading of existing installations to the latest technology is both simple and cost effective.

### Spitfire®

Spitfire® range has been designed to provide high visibility whilst remaining architecturally pleasing with a modern and unobtrusive design. A full range of products are available in recessed, surface mount and weatherproof surface mount variants in standard, Nexus® LX and Nexus® RF. There are single and dual LED fittings available, ensuring you have a product for all applications.

### Clear installation manuals

Clear installation manuals and a modular system allow for the products to be easily installed. Stanilite® offers you practical solutions for all applications, giving you an immediate advantage.

# Stanilite®

## Providing solutions that cover all applications

When choosing a partner for emergency lighting, you need a supplier capable of delivering a solution whenever the need arises, whether you're planning a new build project, overseeing an installation, or considering renewal of a long-standing system.

Stanilite® offers a comprehensive portfolio of products to suit individual budget and project requirements. No matter how large or small the installation is, you can buy with peace of mind knowing that each product is designed using the most innovative and cutting edge technology, delivered to you at a competitive price.

Stanilite® emergency lighting products are designed and manufactured under the ISO9001 Quality Management System, ensuring reduced failure rates and higher quality finished products for the Australian market. By choosing Stanilite® as your emergency lighting partner, you will be placing your projects, your systems, and your people in safe hands.

### Platinum Range

#### 5 year warranty

The only product range, currently available on the market, that comes with 5 year warranty.

- AS2293 tested high quality emergency product
- Reliable Stanilite® brand
- LED energy efficient products
- 10 year product design life
- Lithium batteries
- Advanced power management
- Low maintenance products
- Nexus® monitored products available

### Economy Range

#### 2 year warranty

- AS2293 tested high quality emergency product
- Reliable Stanilite® brand
- Simple battery management
- Low power consumption



# Stanilite®

## The innovators in emergency lighting solutions

With more than 45 years' experience delivering emergency lighting solutions to the Australian market, Stanilite® has been recognised as the market innovator and trusted brand for emergency lighting fixtures and monitored systems. Over this period we have continually developed leading edge products guided by our core values of providing the Australian emergency lighting market with the safest, most reliable, environmentally friendly, energy efficient emergency lighting fixtures.

It was with these guiding principles that we first developed products such as Quickfit®, Spitfire® and Nexus®, which quickly became the most recognised trademarks in the Australian emergency lighting industry. Our Nexus® RF system, designed and engineered in Australia, was such a successful system that it has been installed throughout the world where electrical contractors and building owners alike realise the benefits Nexus® RF offers.

We have a long and proud history of developing innovative and customised solutions and will continue to strive for excellence to exceed market needs.

### Customised Solutions



**45+ years' experience  
in specialised solutions**



**Extensive in-house  
test facilities**



**A variety of installation  
and support solutions**



**Strong aftersales  
support**



**Highly skilled technical  
engineering team**



# Nexus®

Nexus® is a real-time emergency lighting monitoring system which offers building owners control over their public safety obligations, helps manage installation and directs the maintenance of an emergency lighting system.

## A Nexus® network enables the user to:

- Manage the installation and removal of components
- Cost effectively test and monitor the system
- Assign fittings to groups. Fittings are collected in groups so they can be tested together in a logical manner  
e.g. groups could represent different floors or departments
- Manage maintenance activities. Any fitting that fails a test or exhibits a fault will be automatically added to the Maintenance Group ensuring easy identification of the fittings requiring maintenance. The fittings are automatically removed from the Maintenance Group once they have been repaired and re-tested
- Ensure tests are performed properly
- Prepare reports. Testing and maintenance functions can be documented using the Nexus® reporting functions.  
You can record all maintenance operations to satisfy requirements of AS/NZS 2293.2, and plan future maintenance budgets through the use of an online log book
- Log test results and print them as required

Nexus® has been designed so maintenance personnel can easily maintain the emergency lighting system without having to walk through the building or disrupt the power supply. Nexus® can test and report on the status of emergency lights either individually, in groups or all together.

## Stanilite® Nexus® RF Infinity

Stanilite® Nexus® RF Infinity enables customers to set-up, maintain and control their entire emergency lighting installations digitally. It provides a real-time overview of your system which in turn saves time, enables better maintenance practices and enhances building safety.

By harnessing the power of the mobile connectivity, Stanilite® Nexus® RF Infinity unlocks and provides access to data and account management tools, allowing users to manage their emergency lighting system from anywhere, anytime.

### Features and Benefits

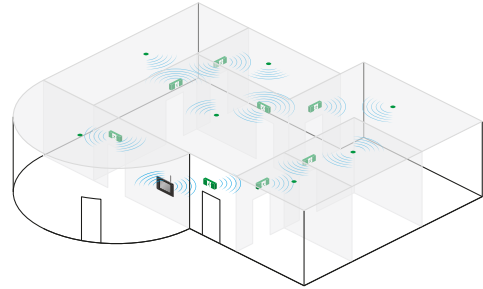
- Endless applications
- Commissioning labour savings
- Ongoing labour savings
- Reliability
- 900 MHz mesh networking system
- Automatic route optimisation ensures the shortest path is used each time
- Optimum channel selection
- Foolproof installation
- Self-monitoring
- Simple Australian Standards compliance

## Nexus® LX

Nexus® LX, a designated cabled system which utilises the Lonworks protocol and relies upon data cable for communication between fittings and network infrastructure. A server computer, running Nexus® LX software, provides the user interface to the system.

### Features and Benefits

- Labour saving
- Maximise system availability
- Self monitoring
- Independent system
- Data integrity
- Bus topology
- Single twisted pair cable
- Easy to use graphic user interface
- Through-life product support service
- Nexus® LX training
- Nexus® LX warranty



## Nexus® RF Infinity provides innovative solutions for monitored emergency lighting systems

Nexus® RF Infinity takes the time proven Nexus® System and replaces the data cable with a radio frequency (RF) method of communication. The result is a system with numerous advantages including further cost reductions in the establishment and maintenance of an emergency lighting monitoring system.



**Endless applications**



**Reliability through self monitoring**



**Cost savings on installation**














**Simplicity through commissioning**



**Wireless technology**

# Icon legend

	Regulatory Compliance Mark (RCM)		2 year warranty		3 year warranty		5 year warranty
	Lamp life 50,000 hours		Lamp life 75,000 hours		Lamp life 100,000 hours		Lithium iron phosphate battery
	Weatherproof rating IP65 & IP67		Impact rating IK04/06/08/10		10 year design life		

## Stanilite®

# Emergency and Exit Lighting

Scan the QR code for more product information



- Product Catalogues
- Datasheets
- Product Selector Tool
- Installation Manuals and More...

# Economy Range

<b>Spitfire® LED</b>	<b>9</b>
Economy Spitfire® LED Recessed Non-Maintained	9
Economy Spitfire® LED Surface Mount Non-Maintained	10
Economy Spitfire® LED Surface Mount Non-Maintained (Black Version)	11
<b>Exit LED</b>	<b>12</b>
Economy Exit LED – Slide Connect	12
Economy Exit LED – Ceiling Mount	13
Economy Exit LED – Wall Mount	14
Economy Exit LED – Base	15
<b>Batten LED</b>	<b>17</b>
Economy Batten LED – 4 Foot	17
<b>Flood Light LED</b>	<b>18</b>
Economy Flood Light LED Weatherproof	18

# Spitfire® LED

Economy Spitfire® LED  
Recessed Non-Maintained



## Features

- 2 year warranty
- D40 photometric classification
- LED technology 100,000+ hours lamp life
- Low power consumption and LED light source for reduced operation and maintenance costs
- High temperature rated lithium iron phosphate battery
- Spring fixing design allows for different ceiling thickness (1mm - 20mm)
- White adaptor included to convert standard 94mm lamp head to 145mm diameter
- Non-maintained operation
- Ingress protection IP20
- Insulation class II
- SAA tested and approved

## Dimensions

Lamp head	Ceiling cutout
94mm Standard	70mm
145mm Adaptor	140mm

## Construction

Part	Construction
Lamp Head	White polycarbonate

## Spare parts

Catalogue no.	Description
0301226	Battery LiFePO4 6.4V 1.5Ah

Catalogue no.	Description	Weight	Light source	Power consumption	Photometrics*			
ECOSPITFIRE	Economy Spitfire® LED Recessed	1.0kg	3W	1.0W average	C0	D40	C90	D40

\*Preliminary results

# Spitfire® LED

Economy Spitfire® LED  
Surface Mount Non-Maintained



### Features

- 2 year warranty
- LED technology 100,000+ hours lamp life
- Low power consumption and LED light source for reduced operation and maintenance costs
- Lithium iron phosphate battery
- Surface mount
- Non-maintained operation
- Ingress protection IP54
- Insulation class II
- SAA tested and approved

### Dimensions

Length	Width	Height
130mm	130mm	30mm

### Construction

Part	Construction
Body	Polycarbonate

### Spare parts

Catalogue no.	Description
0301233	Battery LiFePO4 6.4V 1.5Ah

Catalogue no.	Description	Weight	Light source	Power consumption	Photometrics*			
ECOSPITFIREBOX	Economy Spitfire® LED Surface Mount	1.0kg	2W	1.0W average	C0	D40	C90	D40

\*Preliminary results

# Spitfire® LED

Economy Spitfire® LED  
Surface Mount Non-Maintained  
(Black Version)



## Features

- 2 year warranty
- Quick and easy installation
- Superior photometric classification
- LED technology 100,000+ hours lamp life
- Low power consumption and LED light source for reduced operation and maintenance costs
- Lithium iron phosphate battery
- Surface mount
- Non-maintained operation
- Ingress protection IP54
- Insulation class II
- SAA tested and approved

## Dimensions

Length	Width	Height
130mm	130mm	30mm

## Construction

Part	Construction
Body	Polycarbonate

## Spare parts

Catalogue no.	Description
0301233	Battery LiFePO4 6.4V 1.5Ah

Catalogue no.	Description	Weight	Light source	Power consumption	Photometrics*			
ECOSPITFIREBOXBLK	Economy Spitfire® LED Surface Mount (Black Version)	1.0kg	2W	1.0W average	C0	D40	C90	D40

\*Preliminary results



# Exit LED

## Economy Exit LED – Slide Connect



### Features

- 2 year warranty
- Emergency classification
- LED technology 75,000 hours lamp life
- Lithium iron phosphate battery for longer life
- Unique slide connect bracket that provides strength and enables quick and easy maintenance
- Large terminal block for easy wiring
- Ingress protection IP20
- Designed for direct replacement of installed economy exit LED EELED
- Includes all pictograph diffuser options
- Universal wall/ceiling mounting, can also be rod or wire suspended

### Dimensions

Length	Width	Height (incl. bracket)
362mm	100mm	224mm

### Construction

Part	Construction
Body	ABS
Diffuser	UV stabilised polycarbonate
Bracket	ABS

### Spare parts

Catalogue no.	Description
0301325	Battery LiFePO4 3.2V 1.5Ah

Catalogue no.	Description	Weight	Light source	Power consumption	Photometrics*			
ECOEXIT1BOX	Economy Exit LED Pictograph	2.0kg	LED Strip	4.5W	C0	D12	C90	E3.2

\*Preliminary results

# Exit LED

## Economy Exit LED – Ceiling Mount



### Features

- 2 year warranty
- LED technology 75,000 hours lamp life
- Low power consumption and LED light source for reduced operation and maintenance costs
- Lithium iron phosphate battery for longer life
- Strong, lightweight, UV/FR ABS body and gear tray, easy to install
- Ceiling mount
- Ingress protection IP20
- Switched active input available for mains switching
- Large terminal block (16mm<sup>2</sup>) for easy wiring
- Designed for direct replacement of installed 10W Economy Exit EE110M and EE210S, and Economy Exit LED ECOLEDCM
- Includes diffuser and pictograph for single/double sided installation

### Dimensions

Length	Width (incl. diffuser)	Height
380mm	161mm	226mm

### Construction

Part	Construction
Body and Gear Tray	ABS
Diffuser	Acrylic

### Spare parts

Catalogue no.	Description
0301325	Battery LiFePO4 3.2V 1.5Ah
ECOEXITBASE	Economy Exit LED – Maintained Body
ECOEXITDIFCM	Diffuser Ceiling Mount Includes Pictograph Decals

Catalogue no.	Description	Weight	Light source	Power consumption	Photometrics			
ECOEXITCEILING	Economy Exit LED Pictograph Ceiling Mount	1.4kg	LED strip	4.5W	C0	D6.3	C90	D6.3

# Exit LED

## Economy Exit LED – Wall Mount



### Features

- 2 year warranty
- LED technology 75,000 hours lamp life
- Low power consumption and LED light source for reduced operation and maintenance costs
- Lithium iron phosphate battery for longer life
- Strong, lightweight, ABS body and gear tray, easy to install
- Wall mount
- Ingress protection IP20
- Switched active input available for mains switching
- Large terminal block (16mm<sup>2</sup>) for easy wiring
- Designed for direct replacement of installed 10W Economy Exit EE110M and EE210S, and Economy Exit LED ECOLEDWM
- Includes diffuser and pictograph for single sided installation

### Dimensions

Length	Width	Height
380mm	110mm	161mm

### Construction

Part	Construction
Body and Gear Tray	ABS
Diffuser	Acrylic

### Spare parts

Catalogue no.	Description
0301325	Battery LiFePO4 3.2V 1.5Ah
ECOEXITBASE	Economy Exit LED – Maintained Body
ECOEXITDIFWM	Diffuser Wall Mount Includes Pictograph Decals

Catalogue no.	Description	Weight	Light source	Power consumption	Photometrics			
ECOEXITWALL	Economy Exit LED Pictograph Wall Mount	1.4kg	LED strip	4.5W	C0	D5	C90	D4

# Exit LED

Economy Exit LED – Base



## Features

- 2 year warranty
- LED technology 75,000 hours lamp life
- LED light source for energy saving, lowering operation and maintenance costs
- Lithium iron phosphate battery for longer life
- Strong, lightweight, ABS body and gear tray, easy to install
- Wall or ceiling mount
- Ingress protection IP20
- Switched active input available for mains switching
- Large terminal block (16mm<sup>2</sup>) for easy wiring
- Designed for direct replacement of installed 10W Economy Exit EE110M and EE210S, and Economy Exit LED ECOLED
- Retrofit capability; gear tray fits into existing 10W Economy Exit EE110M and EE210S base
- Main body and gear tray only

## Dimensions

Model	Length	Width	Height
Wall Mount	380mm	110mm	161mm
Ceiling Mount	380mm	161mm	226mm

## Construction

Part	Construction
Body and Gear Tray	ABS
Diffuser	Acrylic

## Spare parts

Catalogue no.	Description
0301325	Battery LiFePO4 3.2V 1.5Ah

## Accessories

Catalogue no.	Description
ECOEXITDIFWM	Diffuser Wall Mount Includes Pictograph Decals
ECOEXITDIFCM	Diffuser Ceiling Mount Includes Pictograph Decals

## Photometrics\*

Model	Classification			
Wall Mount	C0	D5	C90	D4
Ceiling Mount	C0	D6.3	C90	D6.3

\*Preliminary results

### Wall Mount Attachment

### Ceiling Mount Attachment



Catalogue no.	Description	Weight	Light source	Power consumption
ECOEXITBASE	Economy Exit LED Base	1.4kg	LED strip	4.5W

# Batten LED

Economy Batten LED – 4 Foot



## Features

- 2 year warranty
- Typically 3,800 lumens on mains AC operation, 635 lumens in emergency operation
- IP40
- IK06 impact rating
- Long LED life 50,000 hours
- Colour temperature 4,000K
- High colour rendering index CRI>80
- High temperature rated lithium iron phosphate battery
- Large terminal block for quick and easy installation
- Lanyard attached to the lamp and base body makes installation easier
- Frosted diffuser for even light distribution
- Insect proof sealed LED module
- Can be surface mounted or suspended
- AC efficacy typically 100 lumens/watt
- Ambient operating temperature; AC 0°C to +40°C and EM +10°C to +40°C

## Dimensions

Length	Width	Height
1200mm	80mm	65mm

## Construction

Part	Construction
Base Body	Powder coated steel
Lamp Body, End Cap and Diffuser	Polycarbonate and aluminium

## Spare parts

Catalogue no.	Description
0301227	Battery LiFePO4 6.4V 3.0Ah

Catalogue no.	Description	Weight	Light source	Power Consumption			Photometrics*			
				Normal	S/A off	Standby				
ECOBAT4AC	Economy Batten LED AC 3800 Lumens	2.1kg	LED strip	40W	0W	N/A				
ECOBAT4EM	Economy Batten LED EM 3800 Lumens Maintained	2.8kg	LED strip	45W	5W	N/A	C0	D80	C90	D50

\*Preliminary results

# Flood Light LED

Economy Flood Light LED Weatherproof



## Features

- 2 year warranty
- LED technology 100,000 hours plus lamp life
- Low power consumption and easy to install
- Weatherproof rating IP65
- Advanced charging technology combined with lithium iron phosphate battery for longer life
- Light output typically 475 lumens
- Beam angle 120° flood
- Lamp heads can be rotated and tilted to suit particular installation requirements
- Easy to maintain and low maintenance cost
- Wall mounting
- Polycarbonate enclosure
- Ambient operating temperature; 10°C to 40°C

## Dimensions

Length	Width	Height
282mm	90mm	310mm

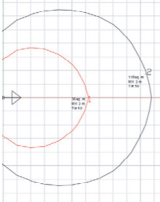
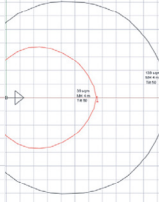
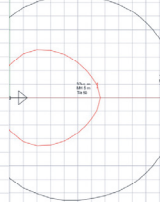
## Construction

Part	Construction
Body and Cover	Polycarbonate
Lamp Head	Polycarbonate


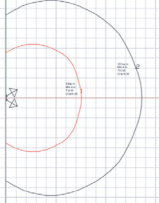
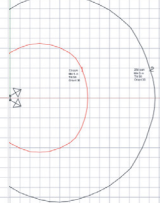
## Spare Parts

Catalogue no.	Description
0301329P	Battery LiFePO4 3.2V 6.0Ah

## Photometrics – 1x LED Flood Head Tilt 50°

Mounted 3mm AFL	Mounted 4mm AFL	Mounted 5mm AFL
		
<b>Area coverage 0.2 lux min</b>		
116m <sup>2</sup>	139m <sup>2</sup>	158m <sup>2</sup>
<b>Area coverage 1.0 lux min</b>		
36m <sup>2</sup>	39m <sup>2</sup>	37m <sup>2</sup>

## Photometrics – 2x LED Flood Head Tilt 50° Orient 30°

Mounted 3mm AFL	Mounted 4mm AFL	Mounted 5mm AFL
		
<b>Area coverage 0.2 lux min</b>		
184m <sup>2</sup>	221m <sup>2</sup>	254m <sup>2</sup>
<b>Area coverage 1.0 lux min</b>		
60m <sup>2</sup>	69m <sup>2</sup>	73m <sup>2</sup>

Catalogue no.	Description	Weight	Light source	Power consumption
ECOFLOOD	ECO Flood Light LED Weatherproof 2x3W Non-Maintained	1.7kg	LED 3W	3W



# Signature Range

<b>Batten LED</b>	<b>21</b>
Signature Batten LED Weatherproof with or without Motion Detect Sensor	21
Signature Batten LED Weatherproof Nexus® – 4 Foot	23

Note: Refer to Platinum range for monitored fittings

# Batten LED

Signature Batten LED Weatherproof  
with or without Motion Detect Sensor



## AC/EM unit features

- 3 year warranty
- 4,500 lumens on mains AC operation, 350 lumens in emergency operation
- Weatherproof rating IP65
- IK08 impact rating
- Ceiling, wall mount or suspension mounting (wall mount requires 45° mounting brackets)
- High wall mount classification using wall mount brackets
- Long LED life 50,000 hours
- Colour temperature 4,000k
- High colour rendering index CRI >80
- Mains terminal block accepts up to 2.5mm<sup>2</sup> cable
- High temperature NiCad battery for longer life
- External mounting clips for ease of installation
- Stainless steel diffuser clips
- High efficiency frosted polycarbonate diffuser
- Ambient operating temperature: AC -20°C to +40°C and EM +4°C to +40°C
- Standard or Nexus® monitored, either cabled or wireless

## Motion detect option

- Microwave motion detect sensor with settings for delay time, detection range and light value function
- Luminaire is not switched on if there is adequate ambient illumination in the area sensed
- Maximum installation height 5m; variable 0.5 - 5.0m

## Photometrics\*

EM Model	Classification			
Ceiling Mount	C0	D40	C90	D50
Wall Mount 45°	C0	D80	C90	D80

\*Preliminary results

## Dimensions

Length	Width	Bare height
1260mm	140mm	90mm

## Construction

Part	Construction
Reflector	Powder coated steel
Body and Diffuser	Polycarbonate
Clips	Stainless steel

## Spare parts

Catalogue no.	Description
0301016P	Battery 3 Cell NiCad 3.6V 4.5Ah

## Accessories

Catalogue no.	Description
21PCCSBLW	Polycarbonate Clips
26PBMD001	Wall Mount Bracket Pair 45°
PBLWSS316KIT	SS316 Marine Grade Accessory Kit (includes diffuser clips x10, suspension clips x2, mounting bracket x2 and M4 x8, screws x2)

Catalogue no.	Description	Weight	Light source	Power consumption*		
				Normal	S/A Off	Standby
SBLWAC45L	Batten LED Weatherproof AC 4500 Lumens	2.9kg	LED	48W	0	N/A
SBLWAC45LMD	Batten LED Weatherproof AC 4500 Lumens with Motion Detect Sensor	2.9kg	LED	48W	0	6W
SBLWEM45LM	Batten LED Weatherproof EM 4500 Lumens Maintained	3.2kg	LED	49W	1W	N/A
SBLWEM45LMMD	Batten LED Weatherproof EM 4500 Lumens Maintained with Motion Detect Sensor	3.2kg	LED	49W	1W	7W

\*Preliminary results

# Batten LED

Signature Batten LED Weatherproof  
Nexus® – 4 Foot



## AC/EM unit features

- Nexus® LX/RF unit
- Typically 4,500 lumens on mains AC operation, 620 lumens in emergency operation
- Weatherproof rating IP65
- IK08 impact rating
- Ceiling, wall mount or suspension mounting (wall mount requires optional 45° mounting brackets)
- Higher wall mount classification using optional wall mount brackets
- Long LED life 75,000 hours
- Colour temperature 4,000K
- High colour rendering index CRI>80
- Mains terminal block accepts up to 2.5mm<sup>2</sup> cable
- High temperature NiCad battery for longer life
- External mounting clips for ease of installation
- Stainless steel diffuser clips
- High efficiency frosted polycarbonate diffuser
- Ambient operating temperature; +4°C to +40°C
- Nexus® monitored, either cabled or wireless

## Motion detect option

- Microwave motion detect sensor with settings for delay time, detection range and light value function
- Luminaire is not switched on if there is adequate ambient illumination in the area sensed
- Energy-efficient and cost-effective operation thanks to 'corridor function' which dims the light to only 10% output with no movements detected and increases the light to 100% when presence is detected
- Maximum installation height 5m; variable 0.5 - 5.0m

## Photometrics\*

EM Model	Classification			
Ceiling Mount	C0	D100	C90	D80
Wall Mount 45°	C0	D125	C90	D100

\*Preliminary results

## Dimensions

Length	Width	Bare height
1260mm	140mm	90mm

## Construction

Part	Construction
Reflector	Powder coated steel
Body and Diffuser	Polycarbonate
Clips	Stainless steel

## Spare parts

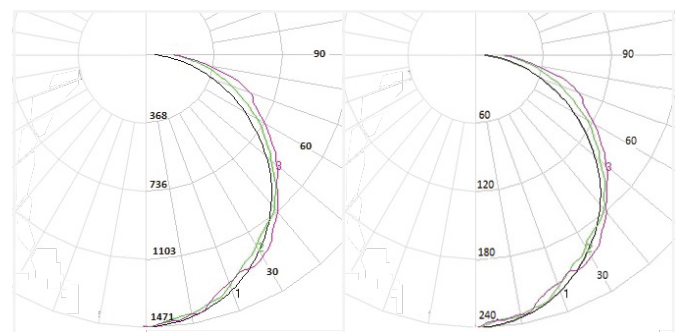
Catalogue no.	Description
03CBMA035P	Battery 4 Cell NiCad 4.8V 4.5Ah

## Accessories

Catalogue no.	Description
21PCCSBLW	Polycarbonate Clips
26PBMD001	Wall Mount Bracket Pair 45°
PBLWSS316KIT	SS316 Marine Grade Accessory Kit (includes diffuser clips x10, suspension clips x2, mounting bracket x2 and M4 x8, screws x2)

## AC Polar Diagram

## EM Polar Diagram



Catalogue no.	Description	Weight	Light source	Power consumption*		
				Normal	S/A Off	Standby
SBLWLX45LM	Signature Batten LED Weatherproof Nexus® LX 4500 Lumens Maintained	3.4kg	LED Strips	49W	1W	N/A
SBLWLX45LMMD	Signature Batten LED Weatherproof Nexus® LX 4500 Lumens Maintained with Motion Detect Sensor	3.4kg	LED Strips	49W	1W	7W
SBLWRF45LM	Signature batten LED Weatherproof Nexus® RF 4500 Lumens Maintained	3.4kg	LED Strips	49W	1W	N/A
SBLWRF45LMMD	Signature Batten LED Weatherproof Nexus® RF 4500 Lumens Maintained with Motion Detect Sensor	3.4kg	LED Strips	49W	1W	7W

\*Preliminary results

\*\*AC versions also available

# Platinum Range

## Spitfire® LED 26

Platinum Spitfire® LED Recessed Non-Maintained	26
Platinum Spitfire® LED Surface Mount Non-Maintained	28
Platinum Spitfire® LED Weatherproof Non-Maintained	29
Platinum Spitfire® LED Weatherproof Remote Lamp Head and Power Supply Unit – Freezer	30

## Exit LED 32

Platinum Exit LED Quickfit®	32
Platinum Exit LED Edgelit Quickfit®	34
Platinum Exit LED Edgelit Surface Mount	35
Platinum Exit LED Edgelit Recessed	36
Platinum Exit LED Edgelit Recessed, Original Style Square Diffuser	37
Platinum Exit LED Quickfit® Theatre Mask	39
Platinum Exit LED Quickfit® Vandal Resistant	41
Platinum Exit LED Weatherproof	42
Platinum Exit LED Weatherproof Remote	43
Platinum Exit LED Quickfit® Weatherproof Remote	44
Platinum Exit LED Evago Ceiling Mount	45
Platinum Exit LED Evago Theatre Mask Ceiling Mount	47
Platinum Exit LED Jumbo	49
Platinum Exit LED Quickfit® Jumbo	51
Platinum Exit LED Jumbo Weatherproof	53
Platinum Exit LED IP65 Quickfit® Kit	54

## Power Supply Unit 56

Platinum Power Supply Unit Remote	56
Platinum Power Supply Unit Remote Weatherproof	57

## Batten LED 58

Platinum Batten LED – 4 Foot	58
Platinum Batten LED Weatherproof – 2 Foot	59
Platinum Batten LED Weatherproof – 4 Foot	61
Platinum Batten LED Weatherproof – 5 Foot	63
Platinum Batten LED Vandal Proof IK10 Nexus® – 2 Foot	65

## Flood Light LED 66

Platinum Flood Light LED IP65 Emergency	66
Platinum Flood Light LED IP65 Weatherproof	68

## Circular LED 70

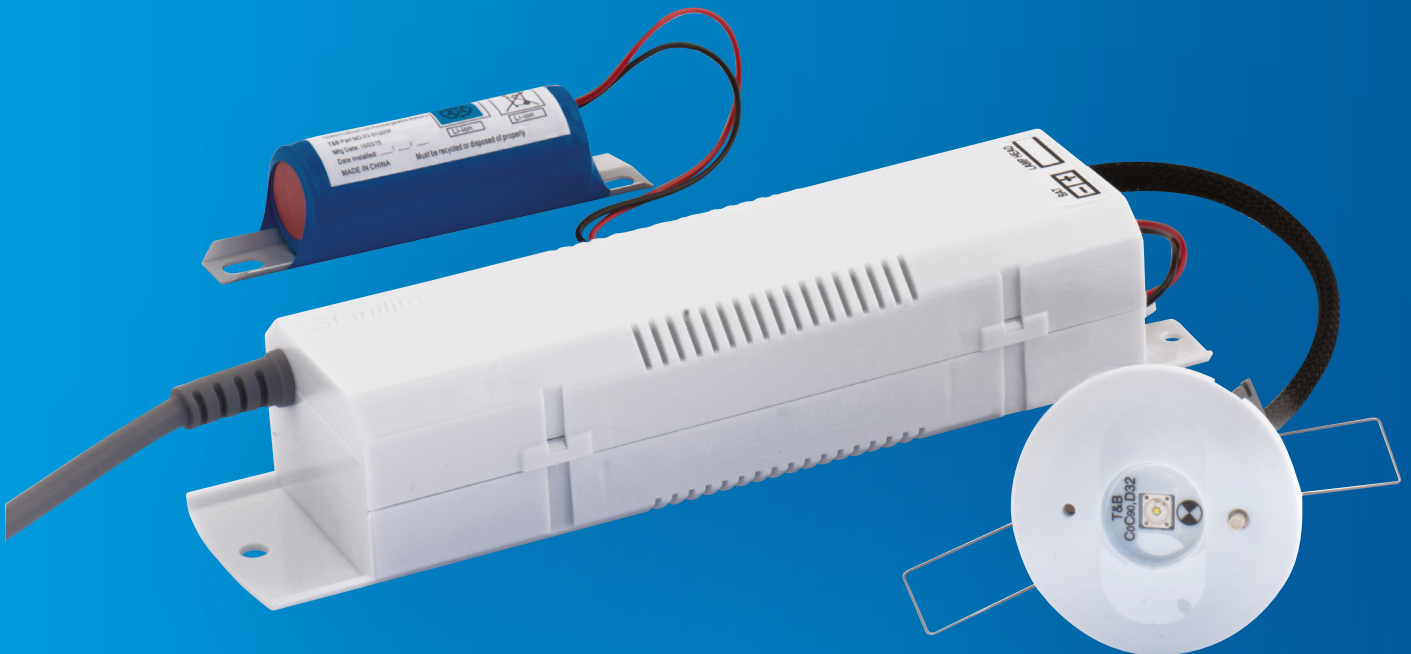
Platinum Circular LED Weatherproof	70
------------------------------------	----

## Area Controller 72

Platinum Nexus® RF Infinity Area Controller V2	72
Platinum Nexus® RF Area Controller Router V2	73

# Spitfire® LED

Platinum Spitfire® LED  
Recessed Non-Maintained



## Features

- 5 year warranty
- Superior photometric classification
- COB LED technology 100,000 hours plus lamp life
- Low power consumption and COB LED light source for reduced operation and maintenance costs
- Lithium iron phosphate battery combined with advanced battery charging technology for longer life
- Spring fixing design allows for different ceiling thickness (1mm-20mm)
- White adaptors included to convert standard 60mm lamp head to 85mm diameter and 141mm diameter size
- White square adaptor available for standard lamp head
- Metal trim covers available in black and stainless steel finish for standard round and square lamp heads
- Metal trim covers can also be painted to any colour

## Dimensions

Lamp head	Ceiling cutout
60mm Standard	50mm
85mm Adaptor	70mm
141mm Adaptor	130mm

## Construction

Part	Construction
Lamp Head	White polycarbonate

## Accessories

Catalogue no.	Description
02SF1LSSTRIM	60mm Lamp Head Round Trim Stainless Steel
02SF1LBLTRIM	60mm Lamp Head Round Trim Black
02SF1LSQSSTRIM	60mm Lamp Head Square Adaptor Trim Stainless Steel
02SF1LSQBLTRIM	60mm Lamp Head Square Adaptor Trim Black
02SFLEDSQADAPT	White Plastic Square Adaptor for LED Spitfire®
02SFLEDLGBLKIT	Black Adaptor Kit
SFLEDVRWRKIT	Vandal Resistant and Weather Resistant Kit to Suit to 60mm Recessed Head

## Spare parts

Catalogue no.	Description
0301301P	1LED with 2 Wire Connection
0301301PB	1LED/D40 COB with 3 Wire Connection
0301303P	2LED/D63 COB with 2 Wire Connection
0301311PB	2LED/D63 COB with 3 Wire Connection

Catalogue no.	Description	Weight	Light source	Power consumption*	Photometrics* Dual LED			
SF1LEDP	Platinum Spitfire® D40 COB LED WA Optics Recessed	1.0kg	2W	1.0W	C0	D40	C90	D40
SF2LEDP	Platinum Spitfire® D63 COB LED WA Optics Recessed	1.0kg	3W	1.0W	C0	D63	C90	D63
SFNXS2LEDP	Platinum Spitfire® D63 COB LED WA Optics Recessed Nexus® LX	1.0kg	3W	1.0W	C0	D63	C90	D63
SFNRF2LEDP	Platinum Spitfire® D63 COB LED WA Optics Recessed Nexus® RF	1.0kg	3W	1.0W	C0	D63	C90	D63

\* Preliminary results



# Spitfire® LED

Platinum Spitfire® LED  
Surface Mount Non-Maintained



## Features

- 5 year warranty
- Superior photometric classification
- LED technology 100,000 hours plus lamp life
- Low power consumption and COB LED light source for reduced operation and maintenance costs
- Lithium iron phosphate battery combined with advanced battery charging technology for longer life
- Advanced pulsetime battery charging
- Surface mount
- Low maintenance – ideal for factories and warehouses
- Standard or Nexus® monitored, either cabled or wireless

## Dimensions

Length	Width	Height
288mm	167mm	68mm

## Construction

Part	Construction
Lamp Head	White polycarbonate
Surface Mount Box	White powder coated steel

## Spare parts

Catalogue no.	Description
0301301P	1LED with 2 Wire Connection
0301301PB	1LED/D40 COB with 3 Wire Connection
0301303P	2LED/D63 COB with 2 Wire Connection
0301311PB	2LED/D63 COB with 3 Wire Connection

Catalogue no.	Description	Weight	Light source	Power consumption*	Photometrics Dual LED*			
SFB1LEDP	Platinum Spitfire® D40 COB LED WA Optics Surface Mount	2.2kg	2W	1.0W	C0	D40	C90	D40
SFB2LEDP	Platinum Spitfire® D63 COB LED WA Optics Surface Mount	2.2kg	3W	1.0W	C0	D63	C90	D63
SFBNXS2LEDP	Platinum Spitfire® D63 COB LED WA Optics Surface Mount Nexus® LX	2.2kg	3W	1.0W	C0	D63	C90	D63
SFBNRF2LEDP	Platinum Spitfire® D63 COB LED WA Optics Surface Mount Nexus® RF	2.2kg	3W	1.0W	C0	D63	C90	D63

\*Preliminary results

# Spitfire® LED

Platinum Spitfire® LED

Weatherproof Non-Maintained



## Features

- 5 year warranty
- Superior photometric classification
- LED technology 100,000 hours plus lamp life
- Single or dual LED
- Low power consumption and LED light source for reduced operation and maintenance costs
- Polycarbonate IP67 weatherproof enclosure
- Advanced charging technology combined with lithium iron phosphate battery for long life and low maintenance
- Surface mount
- Low maintenance – ideal for car parks and coolrooms
- Standard or Nexus® monitored, either cabled or wireless

## Dimensions

Length	Width	Height
278mm	188mm	130mm

## Construction

Part	Construction
Lamp Head	White polycarbonate
Weatherproof Enclosure	Polycarbonate

## Spare parts

Catalogue no.	Description
0301301P	Battery LiFePO4 3.2V 3.2Ah (Suits Single LED)
0301303P	Battery LiFePO4 3.2V 4.5Ah (Suits Dual LED)

Catalogue no.	Description	Weight	Light source	Power consumption*	Photometrics Dual LED*			
SFBWP1LEDP	Platinum Spitfire® Single LED Weatherproof Surface Mount	2.8kg	2W	1.0W	C0	D40	C90	D40
SFBWP2LEDP	Platinum Spitfire® Dual LED Weatherproof Surface Mount	2.8kg	3W	1.0W	C0	D63	C90	D63
SFBWPNXS2LEDP	Platinum Spitfire® Dual LED Weatherproof Surface Mount Nexus® LX	2.8kg	3W	1.0W	C0	D63	C90	D63
SFBWPNRF2LEDP	Platinum Spitfire® Dual LED Weatherproof Surface Mount Nexus® RF	2.8kg	3W	1.0W	C0	D63	C90	D63

\* Preliminary results

# Spitfire® LED

Platinum Spitfire® LED Weatherproof  
Remote Lamp Head And Power  
Supply Unit – Freezer



## Features

- 5 year warranty
- Superior photometric classification
- LED technology 100,000 hours plus lamp life
- Low power consumption and LED light source for reduced operation and maintenance costs
- Polycarbonate IP67 weatherproof enclosure
- Lamp head -30°C operation
- Advanced charging technology combined with lithium iron phosphate battery for long life and low maintenance
- Lamp head used in combination with remote power supply; lamp head mounted inside the freezer or coolroom and remote power supply mounted outside
- Surface mount
- Supplied with 1.5m interconnect cable, suitable for 25mm conduit

## Dimensions

Length	Width	Height
278mm	188mm	130mm

## Construction

Part	Construction
Lamp Head	White polycarbonate
Weatherproof Enclosure	Polycarbonate

## Spare parts

Catalogue no.	Description
0301301P	Battery LiFePO4 3.2V 3.2Ah (Suits Single LED)
0301303P	Battery LiFePO4 3.2V 4.5Ah (Suits Dual LED)

Catalogue no.	Description	Weight		Light source	Power consumption*	Photometrics Dual LED*			
		Lamp Head	Power Supply						
SFBWP1LEDPLHREM	Platinum Spitfire® Single LED Weatherproof Surface Mount Remote Lamp Head	1.8kg	2.0kg	2W	1.0W	C0	D32	C90	D32
SFBWP2LEDPLHREM	Platinum Spitfire® Dual LED Weatherproof Surface Mount Remote Lamp Head	1.8kg	2.0kg	3W	1.0W	C0	D50	C90	D50
SFBWP1LEDPPSU	Platinum Spitfire® LED Weatherproof Surface Mount Power Supply Unit for SFBWP1LEDPLREM*	1.8kg	2.0kg	2W	1.0W	C0	D32	C90	D32
SFBWP2LEDPPSU	Platinum Spitfire® LED Weatherproof Surface Mount Power Supply Unit for SFBWP2LEDPLREM*	1.8kg	2.0kg	3W	1.0W	C0	D50	C90	D50
SFBWPNXS2LEDPPSU	Platinum Spitfire® LED Weatherproof Surface Mount Power Supply Unit Nexus® LX for SFBWP2LEDPLHREM*	1.8kg	2.0kg	3W	1.0W	C0	D50	C90	D50
SFBWPNRFS2LEDPPSU	Platinum Spitfire® LED Weatherproof Surface Mount Power Supply Unit Nexus® RF SFBWP2LEDPLHREM*	1.8kg	2.0kg	3W	1.0W	C0	D50	C90	D50

\*Preliminary results

# Exit LED Quickfit®

Platinum Exit LED Quickfit®



## Features

- 5 year warranty
- LED technology 100,000 hours plus lamp life
- Low power consumption and LED light source for reduced operation and maintenance costs
- Advanced charging technology combined with lithium iron phosphate battery for long life and low maintenance
- Quickfit® unique steel slide connect bracket for quick installation and easy maintenance
- Includes all pictograph diffuser options for single or double sided installation
- Universal wall/ceiling mounting, can also be rod or wire suspended
- Retrofit capability; fits into any existing Quickfit® mounting bracket
- Frame only available for upgrade of installed product (less mounting bracket and diffusers)
- Will accept existing diffusers

## Dimensions

Length	Width	Height (incl. bracket)
379mm	72mm	214mm

## Construction

Part	Construction
Body	UV/FR ABS body
Diffuser	Opal acrylic
Bracket	White powder coated zinc steel

## Spare parts

Catalogue no.	Description
0301302P	Battery LiFePO4 3.2V 3.2Ah
PQFLEDP	LED Platinum Quickfit® Pictograph Exit Less Bracket
PQFLEDPFR	LED Platinum Quickfit® Exit Frame Only
31PQF	Diffuser Quickfit® LED Includes Single Sided Pictograph Decal
PQFNXSLEDP-LB	Platinum Exit LED Quickfit® Less bracket Nexus® LX Pictograph
PQFNRFLEDP-LB	Platinum Exit LED Quickfit® Less Bracket Nexus® RF Pictograph
PQFNXSLEDP-FR	Platinum Exit LED Quickfit® Frame Only Nexus® LX
PQFNRFLEDP-FR	Platinum Exit LED Quickfit® Frame Only Nexus® RF

## Accessories

Catalogue no.	Description
MQFCL	Cantilever Bracket
QFWGCM	Wire Guard – Ceiling
QFWGWM	Wire Guard – Wall
PWQFKITPOLY	IP65 Kit – Polycarbonate for Single or Double Sided Installation
PWQFKITACRY	IP65 Kit – Acrylic for Single or Double Sided Installation
29PIQFVERT	Quickfit® Pictograph Vertical Insert Pack 4 Piece Set

Catalogue no.	Description	Weight	Light source	Power consumption*	Photometrics*			
PQFLEDP	Platinum Exit LED Quickfit® Pictograph	1.8kg	Multiple LED 1.6W	3.2W	C0	D3.2	C90	D3.2
PQFNXSLEDP	Platinum Exit LED Quickfit® Nexus® LX Pictograph	1.8kg	Multiple LED 1.6W	3.2W	C0	D3.2	C90	D3.2
PQFNRFLEDP	Platinum Exit LED Quickfit® Nexus® RF Pictograph	1.8kg	Multiple LED 1.6W	3.2W	C0	D3.2	C90	D3.2

\* Preliminary results

# Exit LED Edgelit

## Platinum Exit LED Edgelit Quickfit®



### Features

- 5 year warranty
- High emergency classification
- LED technology 100,000 hours plus lamp life
- Low power consumption and LED light source for reduced operation and maintenance costs
- Advanced charging technology combined with lithium iron phosphate battery for long life and low maintenance
- Architecturally pleasing slim line design
- Quickfit® unique steel slide connect bracket for quick installation and easy maintenance
- Includes all pictograph diffuser options
- Universal wall/ceiling mounting, can also be rod or wire suspended
- Retrofit capability; fits into any existing Quickfit® mounting bracket
- Standard or Nexus® monitored, either cabled or wireless

### Dimensions

Length	Width	Height (incl. bracket)
379mm	72mm	232mm

### Construction

Part	Construction
Body and Diffuser	Polycarbonate
Bracket	White powder coated zinc steel

### Spare parts

Catalogue no.	Description
0301305P	Battery LiFePO4 3.2V 1.5Ah
MQFCL	Cantilever Bracket

Catalogue no.	Description	Weight	Light source	Power consumption*	Photometrics*			
PLQLEDP	Platinum Exit LED Edgelit Quickfit® Pictograph	1.8kg	Multiple LED 0.7W	2.4W	C0	D3.2	C90	E2
PLQNXSLEDP	Platinum Exit LED Edgelit Quickfit® Nexus® LX Pictograph	1.8kg	Multiple LED 0.7W	2.4W	C0	D3.2	C90	E2
PLQNRFLDP	Platinum Exit LED Edgelit Quickfit® Nexus® RF Pictograph	1.8kg	Multiple LED 0.7W	2.4W	C0	D3.2	C90	E2

\* Preliminary results

# Exit LED Edgelit

## Platinum Exit LED Edgelit Surface Mount



### Features

- 5 year warranty
- High emergency classification
- LED technology 100,000 hours plus lamp life
- Low power consumption and LED light source for reduced operation and maintenance costs
- Advanced charging technology combined with lithium iron phosphate battery for long life and low maintenance
- Architecturally pleasing slim line design
- One-box solution, overall light weight and snap n' clip mechanism allows for quick and easy installation
- Surface mounted – suitable for ceilings where a recessed fitting is not feasible
- Includes all pictograph diffuser options
- Wall and cantilever mounting kit options available
- Nexus® monitored version, either cabled or wireless

### Dimensions

Length	Width	Height (incl. bracket)
375.5mm	79mm	220mm

### Construction

Part	Construction
Visible Housing	White powder coated zinc steel
Diffuser	Polycarbonate
Non-Visible Housing	Plastic

### Spare parts

Catalogue no.	Description
0301304P	Battery LiFePO4 3.2V 1.5Ah

### Accessories

Catalogue no.	Description
PLSLEDCLKIT	Cantilever Mounting Kit
PLSLEDWMKIT	Wall Mounting Kit

Catalogue no.	Description	Weight	Light source	Power consumption*	Photometrics*			
PLSLEDP	Platinum Exit LED Edgelit Surface Mount Pictograph	2.1kg	Multiple LED 0.7W	2.4W	C0	D3.2	C90	E2
PLSNXSLEDP	Platinum Exit LED Edgelit Surface Mount Nexus® LX Pictograph	2.1kg	Multiple LED 0.7W	2.4W	C0	D3.2	C90	E2
PLSNRFLEDP	Platinum Exit LED Edgelit Surface Mount Nexus® RF Pictograph	2.1kg	Multiple LED 0.7W	2.4W	C0	D3.2	C90	E2

\* Preliminary results



# Exit LED Edgelit

## Platinum Exit LED Edgelit Recessed



### Features

- 5 year warranty
- High emergency classification
- LED technology 100,000 hours plus lamp life
- Low power consumption and LED light source for reduced operation and maintenance costs
- Advanced charging technology combined with lithium iron phosphate battery for long life and low maintenance
- Architecturally pleasing slim line design
- One-box solution, overall light weight and snap n' clip mechanism allows for quick and easy installation
- Suits ceiling thickness 1mm-19mm
- 2m flex and plug included
- Includes all pictograph diffuser options
- Adaptor plate available for use when upgrading older edgelit exit signs – see accessories
- Standard or Nexus® monitored, either cabled or wireless

### Dimensions

Item	Length	Width
Face Plate	370mm	120mm
Ceiling Cutout	348mm	97mm

### Construction

Part	Description
Body and Diffuser	Plastic

### Spare parts

Catalogue no.	Description
0301304P	Battery LiFePO4 3.2V 1.5Ah

### Accessories

Catalogue no.	Description
PLRLEDADAPTOR	Cover Plate for Retrofitting

Catalogue no.	Description	Weight	Light source	Power consumption*	Photometrics*			
PLRLEDP	Platinum Exit LED Edgelit Recessed Pictograph	1.9kg	Multiple LED 0.7W	2.4W	C0	D3.2	C90	E2
PLRNXSLEDP	Platinum Exit LED Edgelit Recessed Nexus® LX Pictograph	1.9kg	Multiple LED 0.7W	2.4W	C0	D3.2	C90	E2
PLRNXRFLEDP	Platinum Exit LED Edgelit Recessed Nexus® RF Pictograph	1.9kg	Multiple LED 0.7W	2.4W	C0	D3.2	C90	E2

\* Preliminary results

# Exit LED Edgelit

Platinum Exit LED Edgelit Recessed  
Original Style Square Diffuser



Note: Diffuser sold separately

## Features

- 5 year warranty
- LED technology 100,000 hours plus lamp life
- Low power consumption and LED light source for reduced operation and maintenance costs
- Advanced technology lithium iron phosphate battery for long life and low maintenance
- Advanced pulsetime battery charging
- Slim and elegant
- Surface ceiling mounted
- Easy installation and maintenance
- 2m flex and plug included
- All pictograph diffuser options available – see accessories (order separately)
- Standard or Nexus® monitored, either cabled or wireless

## Dimensions

Item	Length	Width
Face Plate	464mm	121mm
Ceiling Cutout	422mm	93mm

## Construction

Part	Construction
Body and Gear Tray	White powder coated zinc steel
Fascia Cover	White powder coated zinc steel
Diffuser	Acrylic

## Spare parts

Catalogue no.	Description
0301304P	Battery LiFePO4 3.2V 1.5Ah

## Accessories

Catalogue no.	Description
31PL1	Diffuser Single Sided Picto
31PL2	Diffuser Single Sided <Picto
31PL3	Diffuser Single Sided Picto>
31PL5	Diffuser Double Sided Picto
31PL6	Diffuser Double Sided Picto AOW

Catalogue no.	Description	Weight		Light source	Power consumption*	Photometrics*			
		Body	Diffuser						
PLROLEDP	Platinum Exit LED Edgelit Recessed Pictograph, Original Style Square Diffuser	1.5kg	1.6kg	Multiple LED 0.7W	2.4W	C0	D2	C90	E1.6
PLRONXSLEDP	Platinum Exit LED Edgelit Recessed Nexus® LX Pictograph, Original Style Square Diffuser	1.5kg	1.6kg	Multiple LED 0.7W	2.4W	C0	D2	C90	E1.6
PLRONRFLEDP	Platinum exit LED Edgelit Recessed Nexus® RF Pictograph, Original Style Square Diffuser	1.5kg	1.6kg	Multiple LED 0.7W	2.4W	C0	D2	C90	E1.6

\* Preliminary results

# Exit LED Quickfit®

Platinum Exit LED Quickfit® Theatre Mask



## Features

- 5 year warranty
- LED technology 100,000 hours plus lamp life
- Low power consumption and LED light source for reduced operation and maintenance costs
- Advanced technology lithium iron phosphate battery for long life and low maintenance
- Advanced pulsetime battery charging
- Quickfit® unique steel slide connect bracket for quick installation and easy maintenance
- Universal wall/ceiling mounting, can also be rod or wire suspended
- Retrofit capability; fits into any existing Quickfit® mounting bracket

## Dimensions

Length	Width	Height (incl. bracket)
379mm	72mm	214mm

## Construction

Part	Construction
Body	UV/FR ABS body
Diffuser	Acrylic
Bracket	Black powder coated zinc steel

## Spare parts

Catalogue no.	Description
0301302P	Battery LiFePO4 3.2V 3.2Ah
PQFBLEDPLB	Platinum Exit LED Quickfit® Theatre Mask Less Bracket Pictograph
PQFBLEDPFR	Platinum Exit LED Quickfit® Theatre Mask Frame Only
PQFBNXSLEDPLB	Platinum Exit LED Quickfit® Theatre Mask Nexus® LX Less Bracket Pictograph
PQFBNRFLEDPLB	Platinum Exit LED Quickfit® Theatre Mask Nexus® RF Less Bracket Pictograph
PQFBNXSLEDPFR	Platinum Exit LED Quickfit® Theatre Mask Nexus® LX frame only
PQFBNRFLEDPFR	Platinum Exit LED Quickfit® Theatre Mask Nexus® RF Frame Only

## Accessories

Catalogue no.	Description
MQFCL	Cantilever Bracket (White)
QFWGCM	Wire Guard – Ceiling
QFWGWM	Wire Guard – Wall
PWQFKITPOLY	IP65 Kit – Polycarbonate for Single or Double Sided Installation
PWQFKITACRY	IP65 Kit – Acrylic for Single or Double Sided Installation
21OPMD056	Diffuser Theatre Mask without Pictograph Inserts*
29PIQFTM	Standard Theatre Mask Pictograph Inserts

\* For a double sided configuration, additional diffuser 21-OPMD056 is required

Catalogue no.	Description	Weight	Light source	Power consumption*
PQFBLEDP	Platinum Exit LED Quickfit® Theatre Mask Single Sided Includes All Pictograph Inserts	1.8kg	Multiple LED 1.6W	3.2W
PQFBNXSLEDP	Platinum Exit LED Quickfit® Theatre Mask Nexus® LX Single Sided Includes All Pictograph Inserts	1.8kg	Multiple LED 1.6W	3.2W
PQFBNRFLEDP	Platinum Exit LED Quickfit® Theatre Mask Nexus® RF Single Sided Includes All Pictograph Inserts	1.8kg	Multiple LED 1.6W	3.2W

\* Preliminary results

# Exit LED

Platinum Exit LED Quickfit®  
Vandal Resistant



## Features

- 5 year warranty
- LED technology 100,000 hours plus lamp life
- Low power consumption and LED light source for reduced operation and maintenance costs
- IK09 mechanical impact resistance
- Vermin resistant
- Advanced charging technology combined with lithium iron phosphate battery for long life and low maintenance
- Unique internal steel slide connect bracket for quick installation and easy maintenance
- Strong steel body and end cap
- Anti-tamper cover screws
- Universal wall/ceiling mounting
- Includes all pictograph diffuser options for single or double sided installation
- Standard or Nexus® monitored, either cabled or wireless

## Dimensions

Length	Width	Height
410mm	140mm	265mm

## Construction

Part	Construction
Body and End Cap	Steel body and end cap with anti-tamper cover screws, white powder coated finish
Diffuser	Extra tough UV stabilised polycarbonate

## Spare parts

Catalogue no.	Description
0301302P	Battery LiFePO4 3.2V 3.2Ah
PQFLEDPFR	Platinum Exit LED Quickfit® Frame Only

Catalogue no.	Description	Weight	Light source	Power consumption*	Photometrics*			
VPQLEDP	Platinum Exit LED Quickfit® Vandal Resistant Pictograph	7.8kg	Multiple LED 1.6W	3.2W	C0	E1.25	C90	E1.25
VPQNXSLEDP	Platinum Exit LED Quickfit® Vandal Resistant Nexus® LX Pictograph	7.8kg	Multiple LED 1.6W	3.2W	C0	E1.25	C90	E1.25
VPQNRFLDP	Platinum Exit LED Quickfit® Vandal Resistant Nexus® RF Pictograph	7.8kg	Multiple LED 1.6W	3.2W	C0	E1.25	C90	E1.25

\* Preliminary results

# Exit LED

## Platinum Exit LED Weatherproof



### Features

- 5 year warranty
- LED technology 100,000 hours plus lamp life
- Low power consumption and LED light source for reduced operation and maintenance costs
- IP65 weatherproof enclosure
- Advanced charging technology combined with lithium iron phosphate battery for long life and low maintenance
- UV stabilised vandal resistant (IK08) polycarbonate cover
- Surface mount
- Removable gear tray for easy installation and maintenance
- Standard or Nexus® monitored, either cabled or wireless

### Dimensions

Length	Width	Height
380mm	130mm	190mm

### Construction

Part	Construction
Enclosure	Polycarbonate
Gear Tray	White powder coated zinc steel

### Spare parts

Catalogue no.	Description
0301301P	Battery LiFePO4 3.2V 3.2Ah
31PWE1	Diffuser PWEX Picto 24m Includes CLR LID
31PWE2	Diffuser PWEX <Picto 24m Includes CLR LID
31PWE3	Diffuser PWEX Picto> 24m Includes CLR LID

Catalogue no.	Description	Weight	Light source	Power consumption*	Photometrics*			
PWEXLEDP1	Platinum Exit LED Weatherproof Picto	2.0kg	Multiple LED 1.6W	3.2W	C0	D1.25	C90	C1.25
PWEXLEDP2	Platinum Exit LED Weatherproof <Picto	2.0kg	Multiple LED 1.6W	3.2W	C0	D1.25	C90	C1.25
PWEXLEDP3	Platinum Exit LED Weatherproof Picto>	2.0kg	Multiple LED 1.6W	3.2W	C0	D1.25	C90	C1.25
PWEXNXSLEDP1	Platinum Exit LED Weatherproof Nexus® LX Picto	2.0kg	Multiple LED 1.6W	3.2W	C0	D1.25	C90	C1.25
PWEXNXSLEDP2	Platinum Exit LED Weatherproof Nexus® LX <Picto	2.0kg	Multiple LED 1.6W	3.2W	C0	D1.25	C90	C1.25
PWEXNXSLEDP3	Platinum Exit LED Weatherproof Nexus® LX Picto>	2.0kg	Multiple LED 1.6W	3.2W	C0	D1.25	C90	C1.25
PWEXNRFLEDP1	Platinum Exit LED Weatherproof Nexus® RF Picto	2.0kg	Multiple LED 1.6W	3.2W	C0	D1.25	C90	C1.25
PWEXNRFLEDP2	Platinum Exit LED Weatherproof Nexus® RF <Picto	2.0kg	Multiple LED 1.6W	3.2W	C0	D1.25	C90	C1.25
PWEXNRFLEDP3	Platinum Exit LED Weatherproof Nexus® RF Picto>	2.0kg	Multiple LED 1.6W	3.2W	C0	D1.25	C90	C1.25

\* Preliminary result

# Exit LED

## Platinum Exit LED Weatherproof Remote



### Features

- 5 year warranty
- Used in combination with remote power supply; exit mounted inside the freezer or coolroom and remote power supply mounted outside up to 10m away from the exit
- LED technology 100,000 hours plus lamp life
- Low power consumption and LED light source for reduced operation and maintenance costs
- IP65 weatherproof enclosure
- UV stabilised vandal resistant (IK08) polycarbonate cover
- Increased safety and no shock hazard by isolating the AC primary circuits from the unit
- Ideal for freezer or coolroom applications up to -30°C
- Surface mount
- Removable gear tray for easy installation and maintenance
- Remote power supply available in standard, Nexus® LX and Nexus® RF configurations. Refer to separate technical data sheets; PSLED1W6P, PSNXSLED1W6P, PSNRFLED1W6P, WPPSLED1W6P, WPPSNXLED1W6P, WPPSNRFLED1W6P

### Dimensions

Length	Width	Height
380mm	130mm	190mm

### Construction

Part	Construction
Enclosure	Polycarbonate
Gear Tray	White powder coated zinc steel

### Spare parts

Catalogue no.	Description
31PWE1	Diffuser PWEX Picto 24m Includes CLR LID
31PWE2	Diffuser PWEX <Picto 24m Includes CLR LID
31PWE3	Diffuser PWEX Picto> 24m Includes CLR LID

Catalogue no.	Description	Weight	Light source	Power consumption	Photometrics*
PWEXLEDREM1P	Platinum Exit LED Weatherproof Remote Picto – Body Only	1.8kg	Multiple LED 1.6W	**	C0 D1.25 C90 C1.25
PWEXLEDREM2P	Platinum Exit LED Weatherproof Remote <Picto – Body Only	1.8kg	Multiple LED 1.6W	**	C0 D1.25 C90 C1.25
PWEXLEDREM3P	Platinum Exit LED Weatherproof Remote Picto> – Body Only	1.8kg	Multiple LED 1.6W	**	C0 D1.25 C90 C1.25

\* Preliminary results

\*\* See separate technical data sheets; PSLED1W6P, PSNXSLED1W6P, PSNRFLED1W6P, WPPSLED1W6P, WPPSNXLED1W6P, WPPSNRFLED1W6P



# Exit LED

Platinum exit LED Quickfit®  
Weatherproof Remote



## Features

- 5 year warranty
- Used in combination with remote power supply; exit mounted inside the freezer or coolroom and remote power supply mounted outside up to 10m away from the exit
- LED technology 100,000 hours plus lamp life
- LED light source for reduced operation and maintenance costs
- IP65 weatherproof enclosure
- Quickfit® unique steel slide connect bracket for quick installation and easy maintenance
- UV stabilised vandal resistant polycarbonate cover
- Increased safety and no shock hazard by isolating the AC primary circuits from the unit Ideal for freezer or coolroom applications up to -30°C
- Includes all pictograph diffuser options for single and double sided installation
- Can be wall or ceiling mounted and optional bracket kits available for strengthened wall and cantilever mounting
- Remote power supply available in standard, Nexus® LX and Nexus® RF configurations. Refer to separate technical data sheets; PSLED1W6P, PSNXSLED1W6P, PSNRFLED1W6P, WPPSLED1W6P, WPPSNXSLED1W6P, WPPSNRFLED1W6P
- Not suitable for installations where exposure to direct sunlight may occur

## Dimensions

Length	Width	Height
466mm	155mm	274mm

## Construction

Part	Construction
Body	Black UV/FR polycarbonate
Diffuser	Opal acrylic
Bracket	Black powder coated zinc steel
Enclosure Cover	UV polycarbonate
Enclosure Base	Black glass reinforced UV stabilised nylon

## Spare parts

Catalogue no.	Description
0302061	Ceiling Bracket Assembly
WQFCLH	Cantilever Mounting Bracket – Heavy Duty
WQFCLL	Cantilever Mounting Bracket – Light Duty
WQFWM	Wall Mount Bracket

Catalogue no.	Description	Weight	Light source	Power consumption	Photometrics*
PWQFFRLEDPP	Platinum Exit LED Quickfit® Weatherproof Remote – Body Only	2.5kg	Multiple LED 1.6W	**	C0 D3.2 C90 D3.2

\* Preliminary results

\*\* See separate technical data sheets; PSLED1W6P, PSNXSLED1W6P, PSNRFLED1W6P, WPPSLED1W6P, WPPSNXSLED1W6P, WPPSNRFLED1W6P

# Exit LED

Platinum Exit LED Evago Ceiling Mount



## Features

- 5 year warranty
- LED technology 100,000 hours plus lamp life
- Low power consumption and LED light source for reduced operation and maintenance costs
- IP65 weatherproof enclosure
- Advanced charging technology combined with lithium iron phosphate battery for long life and low maintenance
- UV stabilised vandal resistant (IK08) polycarbonate cover
- Surface mount
- Removable gear tray for easy installation and maintenance
- Standard or Nexus® monitored, either cabled or wireless

## Dimensions

	Length	Width	Height
Control Module	159mm	52mm	41mm
Diffuser Assembly	335mm	12mm	184mm

## Construction

Part	Construction
Body	Diecast aluminium
Light Guide	Polycarbonate
Diffuser	Acrylic

## Spare parts

Catalogue no.	Description
03YPMA011	Battery LiFePO4 3.2V 1.14Ah
2610000	Evago Wall Mount Bracket NGS Aluminium

## Accessories

Catalogue no.	Description
31BPGEVG	Backplate Evago 24m
31PEVG1	Diffuser Evago 24m Picto
31PEVG2	Diffuser Evago 24m <Picto
31PEVG3	Diffuser Evago 24m Picto>
EVRSK50CM	Evago Rod Suspension Kit 50cm
EVRSK100CM	Evago Rod Suspension Kit 100cm
EVWSK150CM	Evago Rod Suspension Kit 150cm
EVWSK300CM	Evago Rod Suspension Kit 300cm

## Rod Suspended

## Wire Suspended



Catalogue no.	Description	Weight	Light source	Power consumption*
PELEVEMSCM1	Platinum Exit LED Evago Ceiling Mount Single Sided Picto	1.5kg	Multiple LED 0.6W	2.0W average
PELEVRFSCM1	Platinum Exit LED Evago Nexus® RF Ceiling Mount Single Sided Picto	1.5kg	Multiple LED 0.6W	2.0W average

\* Preliminary results

# Exit LED

Platinum Exit LED Evago Theatre Mask  
Ceiling Mount



## Features

- 5 year warranty
- LED technology 100,000 hours plus lamp life
- Low power consumption and LED light source for reduced operation and maintenance costs
- Advanced charging technology combined with lithium iron phosphate battery for long life and low maintenance
- Architecturally pleasing frameless slim line design
- First-fix plate for quick and easy installation and maintenance
- 24m viewing distance
- Product comes standard with running man pictograph straight. Other pictograph diffuser options (arrow left/right) can be ordered separately – see accessories
- 0.5m and 1m rod suspension kit available as a standard option
- 1.5m and 3m wire suspension kit available as a standard option
- Standard or Nexus® monitored, either cabled or wireless

## Dimensions

	Length	Width	Height
Control Module	159mm	52mm	41mm
Diffuser Assembly	335mm	12mm	184mm

## Construction

Part	Construction
Body	Diecast aluminium
Light Guide	Polycarbonate
Diffuser	Acrylic

## Spare parts

Catalogue no.	Description
03YPMA011	Battery LiFePO4 3.2V 1.14Ah
2610000	Evago Wall Mount Bracket NGS Aluminium

## Accessories

Catalogue no.	Description
31BPBEVG	Backplate Evago 24m Black
31PEGVT1	Diffuser Evago 24m Black Picto
31PEGVT2	Diffuser Evago 24m Black <Picto
31PEGVT3	Diffuser Evago 24m Black Picto>
EVRSK50CM	Evago Rod Suspension Kit 50cm
EVRSK100CM	Evago Rod Suspension Kit 100cm
EVWSK150CM	Evago Rod Suspension Kit 150cm
EVWSK300CM	Evago Rod Suspension Kit 300cm

## Rod Suspended

## Wire Suspended



Catalogue no.	Description	Weight	Light source	Power consumption*
PELEVBEMSCM1	Platinum Exit LED Evago Theatre Mask Ceiling Mount Single Sided Picto	1.5kg	Multiple LED 0.6W	2.0W average
PELEVBRFSCM1	Platinum Exit LED Evago Theatre Mask Nexus® RF Ceiling Mount Single Sided Picto	1.5kg	Multiple LED 0.6W	2.0W average

\* Preliminary results

# Exit LED Jumbo

Platinum Exit LED Jumbo



## Features

- 5 year warranty
- LED technology 100,000 hours plus lamp life
- Low power consumption and LED light source for reduced operation and maintenance costs
- Advanced charging technology combined with lithium iron phosphate battery for long life and low maintenance
- Microprocessor controlled integrated AC/emergency LED driver
- Architecturally pleasing and lightweight design
- Available in all pictograph diffuser options
- Wall mount or ceiling mount versions available to cover all installation requirements
- Exit can also be suspended via jack chain, rod and lanyard (not supplied) if required
- Large terminal block (16mm<sup>2</sup>) for easy wiring
- Viewing distance 40m
- Protective wire guard available – ceiling/suspended mount and wall mount

## Dimensions

Length	Width	Height (incl. bracket)
615mm	123mm	310mm

## Construction

Part	Construction
Body	White powder coated zinc steel
Diffuser	Opal acrylic

## Spare parts

Catalogue no.	Description
0301307P	Battery LiFePO4 6.4V 3.2Ah
31PEJ1	Diffuser ECO Jumbo 18W Single Sided Picto
31PEJ2	Diffuser ECO Jumbo 18W Single Sided <Picto
31PEJ3	Diffuser ECO Jumbo 18W Single Sided Picto>
31PEJ5	Diffuser ECO Jumbo 18W Double Sided Picto
31PEJ6	Diffuser ECO Jumbo 18W Double Sided Picto AOW

## Accessories

Catalogue no.	Description
PEJWMKIT	Bracket Wall Mounting Economy Jumbo Exit White (kit contains 2 brackets)
26CJMD007	Wire Guard – Wall Mount

Catalogue no.	Description	Weight	Light source	Power consumption*	Photometrics*
PEJLEMCM1	Platinum Exit LED Jumbo Emergency Ceiling Mount Single Sided Picto	4.5kg	Multiple LED 4W	9W average, 12W max	C0 D32 C90 D10
PEJLEMCM2	Platinum Exit LED Jumbo Emergency Ceiling Mount Single Sided <Picto	4.5kg	Multiple LED 4W	9W average, 12W max	C0 D32 C90 D10
PEJLEMCM3	Platinum Exit LED Jumbo Emergency Ceiling Mount Single Sided Picto>	4.5kg	Multiple LED 4W	9W average, 12W max	C0 D32 C90 D10
PEJLEMCM5	Platinum Exit LED Jumbo Emergency Ceiling Mount Double Sided Picto	4.5kg	Multiple LED 4W	9W average, 12W max	C0 D32 C90 D10
PEJLEMCM6	Platinum Exit LED Jumbo Led Emergency Ceiling Mount Double Sided Picto AOW	4.5kg	Multiple LED 4W	9W average, 12W max	C0 D32 C90 D10
PEJLLXCM1	Platinum Exit LED Jumbo Nexus® LX Ceiling Mount Single Sided Picto	4.5kg	Multiple LED 4W	9W average, 12W max	C0 D32 C90 D10
PEJLLXCM2	Platinum Exit LED Jumbo Nexus® LX Ceiling Mount Single Sided <Picto	4.5kg	Multiple LED 4W	9W average, 12W max	C0 D32 C90 D10
PEJLLXCM3	Platinum Exit LED Jumbo Nexus® LX Ceiling Mount Single Sided Picto>	4.5kg	Multiple LED 4W	9W average, 12W max	C0 D32 C90 D10
PEJLLXCM5	Platinum Exit LED Jumbo Nexus® LX Ceiling Mount Double Sided Picto	4.5kg	Multiple LED 4W	9W average, 12W max	C0 D32 C90 D10
PEJLLXCM6	Platinum Exit LED Jumbo Nexus® LX Ceiling Mount Double Sided Picto AOW	4.5kg	Multiple LED 4W	9W average, 12W max	C0 D32 C90 D10
PEJLRFCM1	Platinum Exit LED Jumbo Nexus® RF ceiling Mount Single Sided Picto	4.5kg	Multiple LED 4W	9W average, 12W max	C0 D32 C90 D10
PEJLRFCM2	Platinum Exit LED Jumbo Nexus® RF Ceiling Mount Single Sided <Picto	4.5kg	Multiple LED 4W	9W average, 12W max	C0 D32 C90 D10
PEJLRFCM3	Platinum Exit LED Jumbo Nexus® RF Ceiling Mount Single Sided Picto>	4.5kg	Multiple LED 4W	9W average, 12W max	C0 D32 C90 D10
PEJLRFCM5	Platinum Exit LED Jumbo Nexus® RF Ceiling Mount Double Sided Picto	4.5kg	Multiple LED 4W	9W average, 12W max	C0 D32 C90 D10
PEJLRFCM6	Platinum Exit LED Jumbo Nexus® RF Ceiling Mount Double Sided Picto AOW	4.5kg	Multiple LED 4W	9W average, 12W max	C0 D32 C90 D10

\* Preliminary results

# Exit LED Jumbo

Platinum Exit LED Quickfit® Jumbo





## Features

- 5 year warranty
- LED technology 100,000 hours plus lamp life
- Low power consumption and LED light source for reduced operation and maintenance costs
- Advanced charging technology combined with lithium iron phosphate battery for long life and low maintenance
- Nexus® monitored, either cabled or wireless
- Microprocessor controlled integrated AC/emergency LED driver
- Architecturally pleasing design
- Available in all pictograph diffuser options
- Wall and ceiling mount to cover all installation requirements
- Exit can also be suspended via jack chain and rod (not supplied)
- Large terminal block (16mm<sup>2</sup>) for easy wiring
- Viewing distance 36m
- Protective wire guard available – wall mount

## Dimensions

	Length	Width	Height
Single Sided	636mm	95mm	305mm
Double Sided	636mm	122mm	305mm

## Construction

Part	Construction
Body	Aluminium extrusions powder coated and moulded ABS
Bracket	White powder coated zinc steel
Diffuser	Acrylic

## Accessories

Catalogue no.	Description
31PQJ1	Diffuser Quickfit® Jumbo 36m Picto
31PQJ2	Diffuser Quickfit® Jumbo 36m <Picto
31PQJ3	Diffuser Quickfit® Jumbo 36m Picto>
QFJWGWM	Wire Guard – Wall Mount

## Spare Parts

Catalogue no.	Description
0301317P	Battery LiFePO4 6.4V 3.2Ah
02CPAS005	Control Pack

Catalogue no.	Description	Weight	Light source	Power consumption*	Photometrics*
PQFJLED1	Platinum Exit LED Quickfit® Jumbo Wall/Ceiling Mount Single Sided Picto**	4.5kg	Multiple LED strips	9W average, 12W max	C0 E1.25 C90 E1.25
PQFJNXSLED1	Platinum Exit LED Quickfit® Jumbo Nexus® LX Wall/Ceiling Mount Single Sided Picto**	4.5kg	Multiple LED strips	9W average, 12W max	C0 E1.25 C90 E1.25
PQFJNRFLED1	Platinum Exit LED Quickfit® Jumbo Nexus® RF Wall/Ceiling Mount Single Sided Picto**	4.5kg	Multiple LED strips	9W average, 12W max	C0 E1.25 C90 E1.25

\* Preliminary results

\*\* Supplied standard as single sided picto exit, diffuser option is ordered separately, refer accessories above

# Exit LED Jumbo

## Platinum Exit LED Jumbo Weatherproof



### Features

- 5 year warranty
- LED technology 100,000 hours plus lamp life
- Low power consumption and LED light source for reduced operation and maintenance costs
- IP65 weatherproof enclosure
- Advanced charging technology combined with lithium iron phosphate battery for long life and low maintenance
- UV stabilised vandal resistant (IK08) polycarbonate cover
- Surface mount
- Removable gear tray for easy installation and maintenance

### Dimensions

Length	Width	Height
558mm	130mm	280mm

### Construction

Part	Construction
Enclosure	Polycarbonate
Gear Tray	White powder coated zinc steel
Diffuser	Opal acrylic

### Spare Parts

Catalogue no.	Description
0301307P	Battery LiFePO4 6.4V 3.2Ah
31PWJE1	Diffuser WP Jumbo Picto 36m Includes CLR LID
31PWJE2	Diffuser WP Jumbo <Picto 36m Includes CLR LID
31PWJE3	Diffuser WP Jumbo Picto> 36m Includes CLR LID

Catalogue no.	Description	Weight	Light source	Power consumption*	Photometrics*			
PEJLWEM1	Platinum Exit LED Jumbo Weatherproof Emergency Picto	4.7kg	Multiple LED 4W	9W	C0	D6.3	C90	C2
PEJLWEM2	Platinum Exit LED Jumbo Weatherproof Emergency <Picto	4.7kg	Multiple LED 4W	9W	C0	D6.3	C90	C2
PEJLWEM3	Platinum Exit LED Jumbo Weatherproof Emergency Picto>	4.7kg	Multiple LED 4W	9W	C0	D6.3	C90	C2
PEJLWLX1	Platinum Exit LED Jumbo Weatherproof Nexus® LX Picto	4.7kg	Multiple LED 4W	9W	C0	D6.3	C90	C2
PEJLWLX2	Platinum Exit LED Jumbo Weatherproof Nexus® LX <Picto	4.7kg	Multiple LED 4W	9W	C0	D6.3	C90	C2
PEJLWLX3	Platinum Exit LED Jumbo Weatherproof Nexus® LX Picto>	4.7kg	Multiple LED 4W	9W	C0	D6.3	C90	C2
PEJLWRF1	Platinum Exit LED Jumbo Weatherproof Nexus® RF Picto	4.7kg	Multiple LED 4W	9W	C0	D6.3	C90	C2
PEJLWRF2	Platinum Exit LED Jumbo Weatherproof Nexus® RF <Picto	4.7kg	Multiple LED 4W	9W	C0	D6.3	C90	C2
PEJLWRF3	Platinum Exit LED Jumbo Weatherproof Nexus® RF Picto>	4.7kg	Multiple LED 4W	9W	C0	D6.3	C90	C2

\* Preliminary results

# Exit LED Quickfit®

Platinum Exit LED IP65 Quickfit® Kit



## Features

- 5 year warranty
- IP65 weatherproof enclosure kit for Quickfit®
- UV stabilised vandal resistant polycarbonate cover or high impact chemical resistant acrylic cover option
- Can be wall or ceiling mounted
- Optional mounting bracket available for strengthened wall and cantilever mounting
- Designed for converting IP20 Quickfit® Exit to IP65 Quickfit® Weatherproof Exit
- IP65 enclosure kit only (LED Quickfit® Exit order separately)
- IK08 mechanical impact resistance

## Dimensions

Length	Width	Height
466mm	155mm	274mm

## Construction

Part	Construction
Enclosure Cover	UV polycarbonate or high impact acrylic
Enclosure Base	Black glass reinforced UV stabilised nylon

## IP65 kit – compatible with exits

Catalogue no.	Description
PQFLEDP	Platinum Exit LED Quickfit® Pictograph
PQFNXSLEDP	Platinum Exit LED Quickfit® Nexus® LX Pictograph
PQFNRLEDP	Platinum Exit LED Quickfit® Nexus® RF Pictograph
PQFDALEDP	Platinum Exit LED Quickfit® DALI Pictograph
PQFBLEDP	Platinum Exit LED Quickfit® Theatre Mask Single Sided Includes All Pictograph Inserts
PQFBNXSLEDP	Platinum Exit LED Quickfit® Theatre Mask Nexus® LX Single Sided Includes All Pictograph Inserts
PQFBNRLEDP	Platinum Exit LED Quickfit® Theatre Mask Nexus® RF Single Sided Includes All Pictograph Inserts
PQFBDALEDP	Platinum Exit LED Quickfit® Theatre Mask DALI Single Sided Includes All Pictograph Inserts

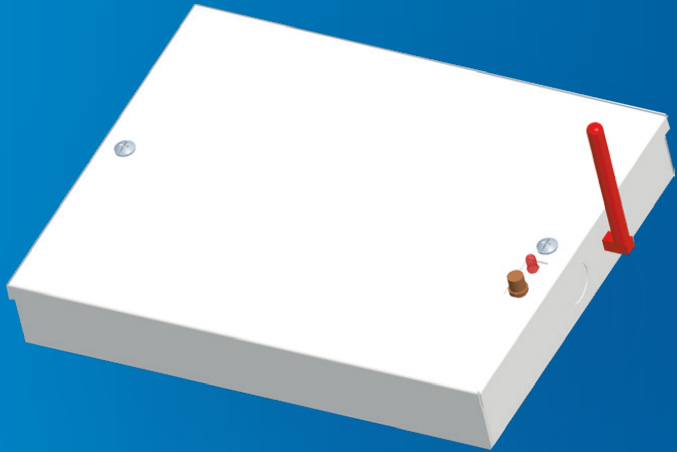
## Accessories

Catalogue no.	Description
WQFCLH	Cantilever Mounting Bracket – Heavy Duty
WQFCLL	Cantilever Mounting Bracket – Light Duty
WQFWM	Wall Mount Bracket
31MQBP	Backplate – White
31MQBPB	Backplate – Black

Catalogue no.	Description	Weight	Light source
PWQFKITPOLY	IP65 Enclosure Kit for Quickfit® – Polycarbonate for Single or Double Sided Installation	1.8kg	Multiple LED 4W
PWQFKITACRY	IP65 Enclosure Kit for Quickfit® – Acrylic for Single or Double Sided Installation	1.8kg	Multiple LED 4W

# Power Supply Unit

## Platinum Power Supply Unit Remote



### Features

- 5 year warranty
- Used in combination with weatherproof remote exit; exit mounted inside the freezer or coolroom and remote power supply mounted outside up to 10m away from the exit
- Low power consumption for reduced operation and maintenance costs
- Advanced charging technology combined with lithium iron phosphate battery for long life and low maintenance
- Includes 10m interconnection cable
- Weatherproof remote exit available in standard configuration. Refer to separate technical data sheets; PWQFFRLEDPP, PWEXLEDREM1P, PWEXLEDREM2P, PWEXLEDREM3P

### Dimensions

Length	Width	Height
254mm	196mm	40mm

### Construction

Part	Construction
Enclosure Cover	White powder coated steel

### Spare parts

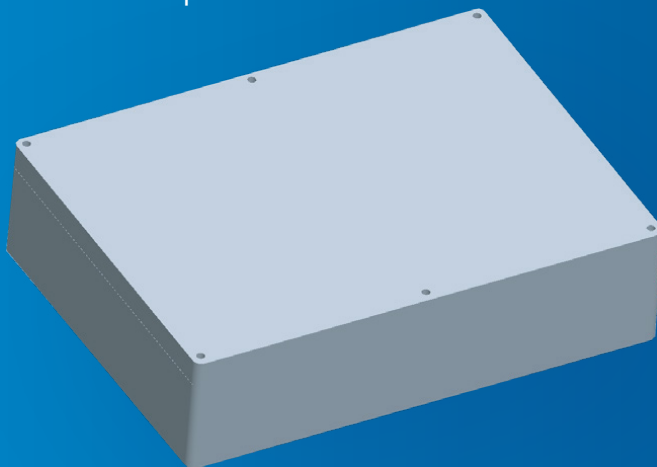
Catalogue no.	Description
0301301P	Battery LiFePO4 3.2V 3.2Ah

Catalogue no.	Description	Weight	Power consumption*
PSLED1W6P	Platinum Power Supply Unit Remote – for Exit LED	1.8kg	3.2W
PSNXSLED1W6P	Platinum Power Supply Unit Remote Nexus® LX – for Exit LED	1.8kg	3.2W
PSNRFLED1W6P	Platinum Power Supply Unit Remote Nexus® RF – for Exit LED	1.8kg	3.2W

\* Preliminary results

# Power Supply Unit

## Platinum Power Supply Unit Remote Weatherproof



### Features

- 5 year warranty
- Used in combination with weatherproof remote exit; exit mounted inside the freezer or coolroom and remote power supply mounted outside up to 10m away from the exit
- Low power consumption for reduced operation and maintenance costs
- Advanced charging technology combined with lithium iron phosphate battery for long life and low maintenance
- Includes 10m interconnection cable
- Weatherproof remote exit available in standard configuration. Refer to separate technical data sheets; PWQFFRLEDPP, PWEXLEDREM1P, PWEXLEDREM2P, PWEXLEDREM3P

### Dimensions

Length	Width	Height
300mm	220mm	75mm

### Construction

Part	Construction
Enclosure Cover	Polycarbonate

### Spare parts

Catalogue no.	Description
0301301P	Battery LiFePO4 3.2V 3.2Ah

Catalogue no.	Description	Weight	Power consumption*
WPPSLED1W6P	Platinum Power Supply Unit Remote Weatherproof – for Exit LED	2.0kg	3.2W
WPPSNXSLED1W6P	Platinum Power Supply Unit Remote Weatherproof Nexus® LX – for Exit LED	2.0kg	3.2W
WPPSNRFLED1W6P	Platinum Power Supply Unit Remote Weatherproof Nexus® RF – for Exit LED	2.0kg	3.2W

\* Preliminary results

# Batten LED

Platinum Batten LED – 4 Foot



## Features

- 5 year warranty
- Typically 4,600 lumens on mains AC operation, 660 lumens in emergency operation
- IP40
- IK06 impact rating
- Long LED life 50,000 hours
- Colour temperature 4,000K
- High colour rendering index CRI>80
- Advanced charging technology combined with lithium iron phosphate battery for long life and low maintenance
- Large terminal block for quick and easy installation
- Lanyard attached to the lamp and base body makes installation easier
- Frosted diffuser for even light distribution
- Insect proof sealed LED module
- Can be surface mounted or suspended
- AC efficacy typically 120 lumens/watt
- Ambient operating temperature; AC 0°C to +40°C and EM +10°C to +40°C

## Dimensions

Length	Width	Height
1200mm	80mm	65mm

## Construction

Part	Construction
Base Body	Powder coated steel
Lamp Body, End Cap and Diffuser	Polycarbonate and aluminium

## Spare parts

Catalogue no.	Description
0301227	Battery LiFePO4 6.4V 3.0Ah
0301307P	Nexus® Battery LiFePO4 6.4V 3.2Ah

Catalogue no.	Description	Weight	Light source	Power consumption*			Photometrics*			
				Normal	S/A off	Standby				
PBL4AC46L	Platinum Batten LED AC 4600 Lumens	2.1kg	LED strips	38W	0W	N/A				
PBL4EM46LM	Platinum Batten LED EM 4600 Lumens Maintained	2.1kg	LED strips	43W	5W	N/A	C0	D80	C90	D50
PBL4LX46LM	Platinum Batten LED Nexus® LX 4600 Lumens Maintained	2.8kg	LED strips	39W	1W	N/A	C0	D63	C90	D50
PBL4RF46LM	Platinum Batten LED Nexus® RF 4600 Lumens Maintained	2.8kg	LED strips	39W	1W	N/A	C0	D63	C90	D50

\* Preliminary results

# Batten LED

Platinum Batten LED Weatherproof – 2 Foot





## Features

- 5 year warranty
- Typically 2,500 lumens on mains AC operation, 455 lumens in emergency operation
- Weatherproof rating IP65
- IK08 impact rating
- Ceiling, wall mount or suspension mounting (wall mount requires optional 45° mounting brackets)
- Higher wall mount classification using optional wall mount brackets
- Long LED life 75,000 hours
- Colour temperature 4,000K
- High colour rendering index CRI>80
- Mains terminal block accepts up to 2.5mm<sup>2</sup> cable
- Advanced charging technology combined with lithium iron phosphate battery for long life and low maintenance
- External mounting clips for ease of installation
- Stainless steel diffuser clips
- High efficiency frosted polycarbonate diffuser
- AC efficacy typically 105 lumens/watt
- Ambient operating temperature; AC -20°C to +40°C and EM +10°C to +40°C

## Dimensions

Length	Width	Height
660mm	140mm	90mm

## Construction

Part	Construction
Reflector	Powder coated steel
Body and Diffuser	Polycarbonate
Clips	Stainless steel

## Accessories

Catalogue no.	Description
21PCCSBLW	Polycarbonate Clips
26PBMD001	Wall Mount Bracket Pair 45°
PBLWSS316KIT	T SS316 Marine Grade Accessory Kit (includes diffuser clips x10, suspension clips x2, mounting bracket x2 and M4 x8, screws x2)

## Spare Parts

Catalogue no.	Description
0301307P	Battery LiFePO4 6.4V 3.2Ah

Catalogue no.	Description	Weight	Light source	Power consumption*			Photometrics*			
				Normal	S/A off	Standby				
PBLWAC25L	Platinum Batten LED Weatherproof AC 2500 Lumens	1.7kg	LED strips	24W	0W	N/A				
PBLWEM25LM	Platinum Batten LED Weatherproof EM 2500 Lumens Maintained	2.0kg	LED strips	24W	1W	N/A	C0	D40	C90	D63
PBLWLX25LM	Platinum Batten LED Weatherproof Nexus® LX 2500 Lumens Maintained	2.0kg	LED strips	25W	1W	N/A	C0	D40	C90	D63
PBLWRF25LM	Platinum Batten LED Weatherproof Nexus® RF 2500 Lumens Maintained	2.0kg	LED strips	25W	1W	N/A	C0	D40	C90	D63

\* Preliminary results

# Batten LED

Platinum Batten LED Weatherproof – 4 Foot



## Features

- 5 year warranty
- Typically 3,500 lumens on mains AC operation, 600 lumens in emergency operation
- Weatherproof rating IP65, IK08 impact rating
- Ceiling, wall mount or suspension mounting (wall mount requires optional 45° mounting brackets)
- Higher wall mount classification using optional wall mount brackets
- Long LED life 75,000 hours
- Colour temperature 4,000K
- High colour rendering index CRI>80
- Mains terminal block accepts up to 2.5mm<sup>2</sup> cable
- Advanced charging technology combined with lithium iron phosphate battery for long life and low maintenance
- External mounting clips for ease of installation, Stainless steel diffuser clips
- High efficiency frosted polycarbonate diffuser, AC efficacy typically 121 lumens/watt
- Ambient operating temperature; AC -20°C to +40°C and EM +10°C to +40°C

## Motion detect option

- Microwave motion detect sensor with settings for delay time, detection range and light value function
- Luminaire is not switched on if there is adequate ambient illumination in the area sensed
- Energy-efficient and cost-effective operation thanks to 'corridor function' which dims the light to only 10% output with no movements detected and increases the light to 100% when presence is detected
- Maximum installation height 5m; variable 0.5 - 5.0m

## Photometrics\*

Model	Classification			
EM Ceiling Mount	C0	D80	C90	D63
EM Wall Mount 45°	C0	D100	C90	D80

\* Preliminary results

## Dimensions

Length	Width	Height
1260mm	140mm	90mm

## Construction

Part	Construction
Reflector	Powder coated steel
Body and Diffuser	Polycarbonate
Clips	Stainless steel

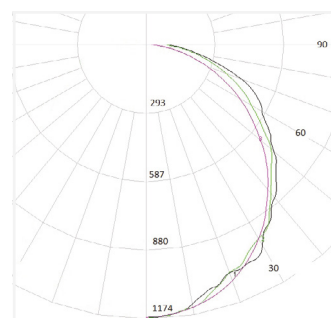
## Spare parts

Catalogue no.	Description
0301307P	Battery LiFePO4 6.4V 3.2Ah

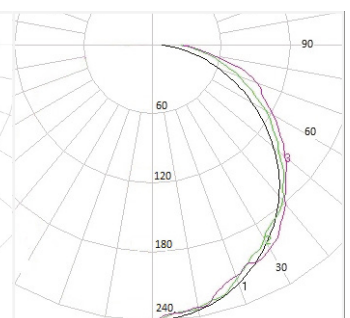
## Accessories

Catalogue no.	Description
21PCCSBLW	Polycarbonate Clips
26PBMD001	Wall Mount Bracket Pair 45°
PBLWSS316KIT	SS316 Marine Grade Accessory Kit (includes diffuser clips x10, suspension clips x2, mounting bracket x2 and M4 x8, screws x2)

## AC Polar Diagram



## EM Polar Diagram



Catalogue no.	Description	Weight	Light source	Power consumption*		
				Normal	S/A off	Standby
PBLWAC35L	Platinum Batten LED Weatherproof AC 3500 Lumens	2.9kg	LED strips	38W	0W	N/A
PBLWAC35LMD	Platinum Batten LED Weatherproof AC 3500 Lumens with Motion Detect Sensor	2.9kg	LED strips	43W	5W	N/A
PBLWEM35LM	Platinum Batten LED Weatherproof EM 3500 Lumens Maintained	3.2kg	LED strips	39W	1W	N/A
PBLWEM35LMMD	Platinum Batten LED Weatherproof EM 3500 Lumens Maintained with Motion Detect Sensor	3.2kg	LED strips	39W	1W	N/A
PBLWLX35LM	Platinum Batten LED Weatherproof Nexus® LX 3500 Lumens Maintained	3.2kg	LED strips	30.5W	1W	N/A
PBLWLX35LMMD	Platinum Batten LED Weatherproof Nexus® LX 3500 Lumens Maintained with Motion Detect Sensor	3.2kg	LED strips	31.5W	1W	6.3W
PBLWRF35LM	Platinum Batten LED Weatherproof Nexus® RF 3500 Lumens Maintained	3.2kg	LED strips	30.5W	1W	N/A
PBLWRF35LMMD	Platinum Batten LED Weatherproof Nexus® RF 3500 Lumens Maintained with Motion Detect Sensor	3.2kg	LED strips	31.5W	1W	6.3W

\* Preliminary results

# Batten LED

Platinum Batten LED Weatherproof – 5 Foot



## Features

- 5 year warranty
- Typically 4,600 lumens on mains AC operation, 600 lumens in emergency operation
- Weatherproof rating IP65, IK08 impact rating
- Ceiling, wall mount or suspension mounting (wall mount requires optional 45° mounting brackets), higher wall mount classification using optional wall mount brackets
- Long LED life 75,000 hours
- Colour temperature 4,000K
- High colour rendering index CRI>80
- Mains terminal block accepts up to 2.5mm<sup>2</sup> cable
- Advanced charging technology combined with lithium iron phosphate battery for long life and low maintenance
- External mounting clips for ease of installation, Stainless steel diffuser clips
- High efficiency frosted polycarbonate diffuser
- AC efficacy typically 121 lumens/watt
- Ambient operating temperature; AC -20°C to +40°C and EM +10°C to +40°C

## Motion detect option

- Microwave motion detect sensor with settings for delay time, detection range and light value function
- Luminaire is not switched on if there is adequate ambient illumination in the area sensed
- Energy-efficient and cost-effective operation thanks to 'corridor function' which dims the light to only 10% output with no movements detected and increases the light to 100% when presence is detected
- Maximum installation height 5m; variable 0.5 - 5.0m

## Photometrics\*

Model	Classification			
EM Ceiling Mount	C0	D80	C90	D63
EM Wall Mount 45°	C0	D100	C90	D80

\* Preliminary results

## Dimensions

Length	Width	Height
1560mm	140mm	90mm

## Construction

Part	Construction
Reflector	Powder coated steel
Body and Diffuser	Polycarbonate
Clips	Stainless steel

## Spare parts

Catalogue no.	Description
0301307P	Battery LiFePO4 6.4V 3.2Ah

## Accessories

Catalogue no.	Description
21PCCSBLW	Polycarbonate Clips
26PBMD001	Wall Mount Bracket Pair 45°
PBLWSS316KIT	SS316 Marine Grade Accessory Kit (includes diffuser clips x10, suspension clips x2, mounting bracket x2 and M4 x8, screws x2)

Catalogue no.	Description	Weight	Light source	Power consumption*		
				Normal	S/A off	Standby
PBLWAC46L	Platinum Batten LED Weatherproof AC 4600 Lumens	3.2kg	LED strips	39.5W	0W	N/A
PBLWAC46LMD	Platinum Batten LED Weatherproof AC 4600 Lumens with Motion Detect Sensor	3.2kg	LED strips	40.5W	0W	3.5W
PBLWEM46LM	Platinum Batten LED Weatherproof EM 4600 Lumens Maintained	3.6kg	LED strips	40.5W	1W	N/A
PBLWEM46LMMD	Platinum Batten LED Weatherproof EM 4600 Lumens Maintained with Motion Detect Sensor	3.6kg	LED strips	41.5W	1W	4.5W
PBLWLX46LM	Platinum Batten LED Weatherproof Nexus® LX 4600 Lumens Maintained	3.85kg	LED strips	40.5W	1W	N/A
PBLWLX46LMMD	Platinum Batten LED Weatherproof Nexus® LX 4600 Lumens Maintained with Motion Detect Sensor	3.85kg	LED strips	41.5W	1W	4.5W
PBLWRF46LM	Platinum Batten LED Weatherproof Nexus® RF 4600 Lumens Maintained	3.85kg	LED strips	40.5W	1W	N/A
PBLWRF46LMMD	Platinum Batten LED Weatherproof Nexus® RF 4600 Lumens Maintained with Motion Detect Sensor	3.85kg	LED strips	41.5W	1W	4.5W

\* Preliminary results

# Batten LED

Platinum Batten LED Vandal Proof  
IK10 Nexus® – 2 Foot



## Features

- 5 year warranty
- Typically 405 lumens in emergency operation
- Single piece EPDM gasket ensures the high IP66 rating
- IK10 impact rating and anti ligature
- Pressure die-cast marine grade aluminium body with a powder coated paint finish
- Robust polycarbonate lens resist impact and abuse
- Long LED life 75,000 hours
- Colour temperature 4,000K
- High colour rendering index CRI>80
- Mains terminal block accepts up to 2.5mm<sup>2</sup> cable
- Advanced charging technology combined with lithium iron phosphate battery for long life and low maintenance
- Ambient operating temperature; +10°C to +40°C
- Nexus® monitored, either cabled or wireless

## Dimensions

Length	Width	Height
670mm	140mm	85mm

## Construction

Part	Construction
Reflector	Powder coated steel
Body	Die-cast marine grade aluminium powder coated light grey paint finish
Diffuser	Polycarbonate

## Spare parts

Catalogue no.	Description
0301307P	Battery LiFePO4 6.4V 3.2Ah

Catalogue no.	Description	Weight	Light source	Power consumption*			Photometrics			
				Normal	S/A off	Standby				
PBLVLX2F5WN	Platinum Batten LED Vandal Proof IK10 Nexus® LX 5W IP66 Non-Maintained	3.5kg	LED strips	1W	N/A	N/A	C0	D32	C90	C32
PBLVRF2F5WN	Platinum Batten LED Vandal Proof IK10 Nexus® RF 5W IP66 Non-Maintained	3.5kg	LED strips	1W	N/A	N/A	C0	D32	C90	C32

# Flood Light LED

Platinum Flood Light LED IP65 Emergency





## Features

- 5 year warranty
- Cree® LED with 100,000 hours plus lamp life
- Fully adjustable heads with 120° beam angle
- Weatherproof rating IP65
- Impact resistance Rating: IK06
- Advanced battery charging technology combined with lithium iron phosphate battery for longer life
- Light output typically 540 lumens per lamp head
- Suitable for both commercial and industrial applications
- Lamp heads can be easily rotated and tilted to suit particular installation requirements
- Wall mounting, comes fitted with standard 10A flex and plug
- Light weight and quick installation
- UV stabilised enclosure
- Ambient operating temperature 10°C to 40°C

## Dimensions

Length	Width	Height
255mm	130mm	255mm

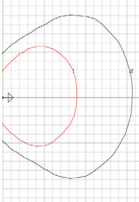
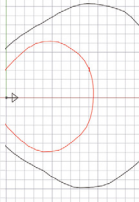
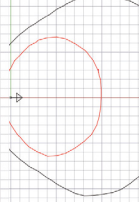
## Construction

Part	Construction
Body & Cover	Polycarbonate
Lamp Head	Polycarbonate

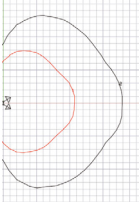
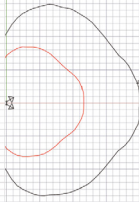

## Spare Parts

Catalogue no.	Description
0301330	Battery LiFePO4 6.4V 6.4Ah

## Photometrics – 1x LED Flood Head Tilt 50°

Mounted 3mm AFL	Mounted 4mm AFL	Mounted 5mm AFL
		
<b>Area coverage 0.2 lux min</b>		
225m <sup>2</sup>	280m <sup>2</sup>	328m <sup>2</sup>
<b>Area coverage 1.0 lux min</b>		
80m <sup>2</sup>	94m <sup>2</sup>	105m <sup>2</sup>

## Photometrics – 2x LED Flood Head Tilt 50° Orient 30°

Mounted 3mm AFL	Mounted 4mm AFL	Mounted 5mm AFL
		
<b>Area coverage 0.2 lux min</b>		
366m <sup>2</sup>	455m <sup>2</sup>	533m <sup>2</sup>
<b>Area coverage 1.0 lux min</b>		
130m <sup>2</sup>	153m <sup>2</sup>	173m <sup>2</sup>

Catalogue no.	Description	Weight	Light source	Power consumption
WPFL24LEDP	Flood Light 2x4W LED IP65 Weatherproof Emergency Non-Maintained	1.5kg	LED 2x4W	1.2W avg/6W max*
WPFLRF24LEDP	Flood Light 2x4W RF LED IP65 Weatherproof Emergency Non-Maintained	1.5kg	LED 2x4W	1.2W avg/6W max*

\* For 16 hours when charging, discharge battery



# Flood Light LED

Platinum Flood Light LED IP65 Weatherproof



## Features

- 5 year warranty
- LED technology 100,000 hours plus lamp life
- Low power consumption and LED light source for reduced operation and maintenance costs
- Weatherproof rating IP65
- Advanced charging technology combined with lithium iron phosphate battery for long life and low maintenance
- Nexus® monitored, either cabled or wireless
- Light output typically 600 lumens per lamp head
- Beam angle 120° flood
- Lamp heads can be rotated and tilted to suit particular installation requirements
- Easy to maintain and low maintenance cost
- Wall mounting
- UV stabilised enclosure
- Ambient operating temperature;
  - WPFLxx210LEDP 10°C to 40°C
  - WPFLxx210LEDP-RMT remote lamp head -30°C to 40°C
  - WPFLxx210LEDP-RMT remote control gear 10°C to 40°C
  - WPFL210LEDP-RMT remote lamp head -30°C to 40°C
  - WPFL210LEDP-RMT remote control gear 10°C to 40°C

## Dimensions

Length	Width	Height
380mm	130mm	190mm

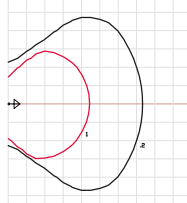
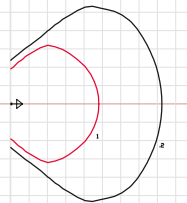
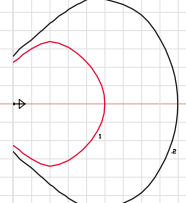
## Construction

Part	Construction
Body & Cover	Polycarbonate
Lamp Head	Diecast aluminium and steel bracket, white powder coated. Glass lens

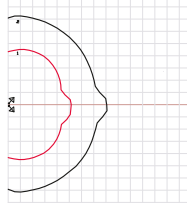
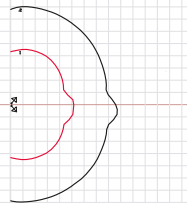
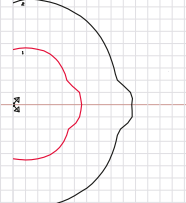
## Spare Parts

Catalogue no.	Description
0301321	Battery LiFePO4 12.8V 6.0Ah
1510027	Lamp LED 10W

## Photometrics – 1x LED Flood Head Tilt 50°

Mounted 3mm AFL	Mounted 4mm AFL	Mounted 5mm AFL
		
<b>Area coverage 0.2 lux min</b>		
200m <sup>2</sup>	265m <sup>2</sup>	320m <sup>2</sup>
<b>Area coverage 1.0 lux min</b>		
85m <sup>2</sup>	95m <sup>2</sup>	105m <sup>2</sup>

## Photometrics – 2x LED Flood Head Tilt 50° Orient 30°

Mounted 3mm AFL	Mounted 4mm AFL	Mounted 5mm AFL
		
<b>Area coverage 0.2 lux min</b>		
340m <sup>2</sup>	420m <sup>2</sup>	500m <sup>2</sup>
<b>Area coverage 1.0 lux min</b>		
123m <sup>2</sup>	143m <sup>2</sup>	160m <sup>2</sup>

Catalogue no.	Description	Weight	Light source	Power consumption
WPFL210LEDP	Platinum Flood light LED Weatherproof 2x10W Non-Maintained	4.0kg	LED 10W	1.5W avg/10W max*
WPFL210LEDPRMT	Platinum Flood Light LED Weatherproof 2x10W Non-Maintained with Remote Lamp Head	4.0kg	LED 10W	1.5W avg/10W max*
WPFLX210LEDP	Platinum Flood Light LED Weatherproof Nexus® LX 2x10W Non-Maintained	4.0kg	LED 10W	1.5W avg/10W max*
WPFLX210LEDPRMT	Platinum Flood Light LED Weatherproof Nexus® LX 2x10W Non-Maintained with Remote Lamp Head	4.0kg	LED 10W	1.5W avg/10W max*
WPFLRF210LEDP	Platinum Flood Light LED Weatherproof Nexus® RF 2x10W Non-Maintained	4.0kg	LED 10W	1.5W avg/10W max*
WPFLRF210LEDPRMT	Platinum Flood Light LED Weatherproof Nexus® RF 2x10W Non-Maintained with Remote Lamp Head	4.0kg	LED 10W	1.5W avg/10W max*

\* For 16 hours when charging, discharge battery

# Circular LED

Platinum Circular LED Weatherproof



## AC/EM unit features

- 5 year warranty
- 1500 lumens on AC mains
- Ceiling or wall mount
- Weatherproof rating IP65
- IK08 impact rating
- Long LED life 50,000 hours
- Suitable for difficult to access areas
- High colour rendering index CRI >80
- Colour temperature 4,000k
- Lithium iron phosphate batteries

## Motion Detect Option

- Microwave motion detect sensor with settings for delay time, detection range and light value function
- Delay time, detection range and light value can be set via 9 dip switches
- Pre-activated 'corridor function' dims the light to 10% output with no movements detected and increases the light to 100% when presence is detected
- Maximum installation height 5m

## Photometrics\*

EM Model	Classification			
EM Ceiling Mount	C0	D16	C90	D16
EM Wall Mount	C0	D3.2	C90	D3.2
Nexus® LX/RF EM Ceiling Mount	C0	D16	C90	D16
Nexus® LX/RF EM Wall Mount	C0	D3.2	C90	D3.2

## Dimensions

Diameter	Height (incl. Diffuser)
363mm	142mm

## Construction

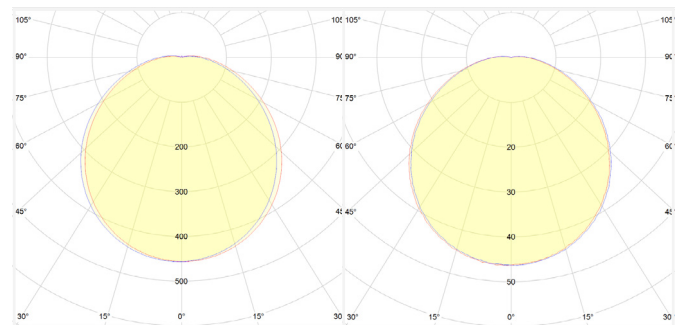
Part	Construction
Base	Light grey powder coated diecast aluminium
Diffuser	Polycarbonate

## Spare Parts

Catalogue no.	Description
0301301P	Battery LiFePO4 3.2V 3.2Ah

## AC Polar Diagram

## EM Polar Diagram



Catalogue no.	Description	Weight	Light source	Power consumption*		
				Normal	S/A Off	Standby
PCWACLED	Platinum Circular LED Weatherproof AC	3.5kg	Tridonic LED engine	18.7W	N/A	N/A
PCWACLEDMD	Platinum Circular LED Weatherproof AC with Motion Detect Sensor	4.5kg	Tridonic LED engine	18.7W	N/A	2.76W
PCWEMLEDS	Platinum Circular LED Weatherproof EM Sustained	3.5kg	Tridonic LED engine	21.8W	5.5W	N/A
PCWEMLEDSMD	Platinum Circular LED Weatherproof EM Sustained with Motion Detect Sensor	4.5kg	Tridonic LED engine	21.8W	5.5W	6.0W
PCWLXLEDS	Platinum Circular LED Weatherproof Nexus® LX Sustained	4.5kg	Tridonic LED engine	21.8W	6.0W	N/A
PCWLXLEDSMD	Platinum Circular LED Weatherproof Nexus® LX Sustained with Motion Detect Sensor	4.5kg	Tridonic LED engine	21.8W	6.0W	6.5W
PCWRFLLED	Platinum Circular LED Weatherproof Nexus® RF Sustained	4.5kg	Tridonic LED engine	21.8W	6.0W	N/A
PCWRFLLEDMD	Platinum Circular LED Weatherproof Nexus® RF Sustained with Motion Detect Sensor	4.5kg	Tridonic LED engine	21.8W	6.0W	6.5W

\* AC versions also available

# Area Controller

Platinum Nexus® RF Infinity  
Area Controller V2



## Features

- System head end controller
- Nexus® RF database containing all system and unit information
- Co-ordinates up to 125 nodes
- SD micro flash memory 8GB
- Communicates to fittings via 918 - 925.8 MHz mesh network
- 7" colour graphical user interface LCD resistive touch screen – includes stylus
- Integrated web server for remote control
- USB-A and USB-B ports for connection to peripherals such as keyboard, mouse, modem, printer and laptop/PC
- Ethernet port for LAN/WAN connectivity
- 50 ohm SMA antenna jack
- Battery allows the area controller to be used in mobile mode and features fast recharge capability

## Includes

- 1GB USB flash memory stick
- 2m blue Cat 5e UTP patch lead
- Wall bracket
- Mains plug pack 240VAC 50/60Hz, 12VDC 3A max output
- 150mm dipole antenna

## Dimensions\*

Length	Width	Height
243mm	62mm	150mm

\* Including protective cover

## Construction

Part	Construction
Body	Polycarbonate
Bracket	Zinc steel
Cover	Polyurethane

## Spare parts

Catalogue no.	Description
14-00211	Battery 6 Cell NiMH 7.2V 2.3Ah
02-ACBMV2	AC Battery Module V2
02-NRFEIMV1	Nexus® RF Interface Module V1
32-00206	Plug Pack 12V 3A

Catalogue no.	Description	Power consumption*		
		Display on; fast charge max	Display on; slow charge	Display off; slow charge
NAC-2	Nexus RF Area Controller 1EIM – with Battery	20W	7W	3W

\* Designed to comply with AS2293 and meet relevant Australian EMC standards

# Area Controller

Platinum Nexus® RF  
Area Controller Router V2



## Features

- Stores back up of Nexus® RF database containing all system and unit information
- Co-ordinates up to 125 nodes as part of the larger system
- SD micro flash memory 8GB
- Communicates to fittings via 918 - 925.8 MHz mesh network
- Integrated web server for remote control
- Ethernet port for LAN/WAN connectivity
- 50 ohm SMA antenna jack
- Can be used as a stand alone controller for small sites where the graphical interface of the NAC-1/NAC-2 is not required (assumes that web browsing access is available)

## Includes

- 2m blue Cat 5e UTP patch lead
- Wall bracket
- Mains plug pack 240VAC 50/60Hz, 12VDC 3A max output
- 150mm dipole antenna

## Dimensions\*

Length	Width	Height
243mm	62mm	150mm

\* Including protective cover

## Construction

Part	Construction
Body	Polycarbonate
Bracket	Zinc steel
Cover	Polyurethane

## Spare parts

Catalogue no.	Description
02-NRFEIMV1	Nexus® RF Interface Module V1
32-00206	Mains Plug Pack 12V 3A
32-20998	Dipole Antenna 15x150 Black SMA
32-00204	Omnidirectional Antenna
32-20975	RF Impedance Converter 50 to 75 ohm

Catalogue no.	Description	Power consumption*	Power requirements
NACR-1	Nexus® RF Area Controller Router	3W	240VAC 50/60 Hz
NACR-1EXPK	Nexus® RF Area Controller Router (NACR-1) Expansion Pack **		
NACR-2	Nexus® RF Area Controller Router up to 250 Nodes		

\* Designed to comply with AS2293 and meet relevant Australian EMC standards

\*\* Expansion pack, expands the capability of RF area controller router up to 250 nodes

# Emergency Lighting Spacing Table

Australian Standard AS2293.1-2018

Australian Standard AS2293.1-2018 specifies that the light level at the floor, under emergency lighting conditions, must be a minimum of 0.2 lux. The illuminance level at the floor will be dependent upon both the light output of the fitting and the height at which the fitting is mounted above the floor.

Emergency light fittings are tested and based on performance, then assigned classifications in a number of classes (Class A to Class E). Fittings with a single light source are generally classified

in two axis, C0 and C90. Fittings with two light sources such as a 2x36W batten are generally assigned classifications in three axis – C0, C90 and C180 as the light distribution is not symmetrical.

The spacing tables in Australian Standard AS2293.1-2018 can be used to determine the maximum spacing between fittings in each of the several axis, dependent upon the classification of the fitting.

Classification		Height (m)															
		2.1	2.4	2.7	3.0	3.3	3.6	4.0	4.5	5.0	6.0	7.0	8.0	9.0	10.0	15.0	20.0
D	1	3.4	0.0 <sup>4</sup>	0.0 <sup>4</sup>	0.0 <sup>4</sup>	N/A	N/A	N/A	N/A	N/A	N/A	N/A	N/A	N/A	N/A	N/A	N/A
D	1.25	3.9	3.7	0.0 <sup>4</sup>	0.0 <sup>4</sup>	0.0 <sup>4</sup>	N/A	N/A	N/A	N/A	N/A	N/A	N/A	N/A	N/A	N/A	N/A
D	1.6	4.6	4.4	4.2	0.0 <sup>4</sup>	0.0 <sup>4</sup>	0.0 <sup>4</sup>	N/A	N/A	N/A	N/A	N/A	N/A	N/A	N/A	N/A	N/A
D	2	5.2	5.1	5.0	4.7	0.0 <sup>4</sup>	0.0 <sup>4</sup>	0.0 <sup>4</sup>	N/A	N/A	N/A	N/A	N/A	N/A	N/A	N/A	N/A
D	2.5	5.8	5.8	5.7	5.6	5.3	0.0 <sup>4</sup>	0.0 <sup>4</sup>	0.0 <sup>4</sup>	N/A	N/A	N/A	N/A	N/A	N/A	N/A	N/A
D	3.2	6.5	6.5	6.5	6.5	6.3	6.1	5.8	0.0 <sup>4</sup>	0.0 <sup>4</sup>	N/A	N/A	N/A	N/A	N/A	N/A	N/A
D	4	7.1	7.2	7.3	7.3	7.2	7.1	6.9	0.0 <sup>4</sup>	0.0 <sup>4</sup>	0.0 <sup>4</sup>	N/A	N/A	N/A	N/A	N/A	N/A
D	5	7.8	8.0	8.1	8.2	8.2	8.1	8.0	7.7	7.2	0.0 <sup>4</sup>	0.0 <sup>4</sup>	N/A	N/A	N/A	N/A	N/A
D	6.3	8.5	8.8	8.9	9.1	9.1	9.2	9.1	9.0	8.7	0.0 <sup>4</sup>	0.0 <sup>4</sup>	N/A	N/A	N/A	N/A	N/A
D	8	9.4	9.7	9.9	10.1	10.2	10.3	10.3	10.3	10.1	9.5	0.0 <sup>4</sup>	0.0 <sup>4</sup>	N/A	N/A	N/A	N/A
D	10	10.2	10.5	10.8	11.0	11.2	11.4	11.5	11.5	11.5	11.1	10.3	0.0 <sup>4</sup>	0.0 <sup>4</sup>	N/A	N/A	N/A
D	12.5	11.0	11.4	11.8	12.1	12.3	12.5	12.7	12.8	12.9	12.8	12.2	0.0 <sup>4</sup>	0.0 <sup>4</sup>	0.0 <sup>4</sup>	N/A	N/A
D	16	11.5	12.5	12.9	13.3	13.6	13.8	14.1	14.4	14.5	14.6	14.4	13.8	0.0 <sup>4</sup>	0.0 <sup>4</sup>	N/A	N/A
D	20	11.5	13.2	14.0	14.4	14.8	15.1	15.4	15.8	16.0	16.3	16.2	16.0	15.4	14.4	N/A	N/A
D	25	11.5	13.2	14.8	15.7	16.1	16.4	16.8	17.3	17.6	18.1	18.3	18.2	17.8	17.2	0.0 <sup>4</sup>	N/A
D	32	11.5	13.2	14.8	16.5	17.6	18.0	18.5	19.0	19.5	20.1	20.5	20.7	20.6	20.3	0.0 <sup>4</sup>	N/A
D	40	11.5	13.2	14.8	16.8	18.1	19.5	20.1	20.7	21.2	22.1	22.6	23.0	23.1	23.0	0.0 <sup>4</sup>	N/A
D	50	11.5	13.2	14.8	16.8	18.1	19.8	21.8	22.5	23.1	24.1	24.9	25.4	25.7	25.8	23.6	0.0 <sup>4</sup>
D	63	11.5	13.2	14.8	16.8	18.1	19.8	22.0	24.5	25.2	26.4	27.3	28.0	28.5	28.8	27.9	0.0 <sup>4</sup>
D	80	11.5	13.2	14.8	16.8	18.1	19.8	22.0	24.7	27.5	28.9	30.0	30.9	31.5	32.1	32.3	28.8
D	100	11.5	13.2	14.8	16.8	18.1	19.8	22.0	24.7	27.5	31.3	32.6	33.7	34.5	35.2	36.5	34.4
D	125	11.5	13.2	14.8	16.8	18.1	19.8	22.0	24.7	27.5	33.0	35.4	36.7	37.7	38.6	40.8	39.9
D	160	11.5	13.2	14.8	16.8	18.1	19.8	22.0	24.7	27.5	33.0	38.5	40.2	41.4	42.5	45.7	46.0
D	200	11.5	13.2	14.8	16.8	18.1	19.8	22.0	24.7	27.5	33.0	38.5	43.6	45.0	46.2	50.3	51.6
D	250	11.5	13.2	14.8	16.8	18.1	19.8	22.0	24.7	27.5	33.0	38.5	44.0	48.8	50.2	55.2	57.4
D	320	11.5	13.2	14.8	16.8	18.1	19.8	22.0	24.7	27.5	33.0	38.5	44.0	49.5	54.9	60.9	64.1
D	400	11.5	13.2	14.8	16.8	18.1	19.8	22.0	24.7	27.5	33.0	38.5	44.0	49.5	54.9	66.3	70.5
D	500	11.5	13.2	14.8	16.8	18.1	19.8	22.0	24.7	27.5	33.0	38.5	44.0	49.5	54.9	72.1	77.1
D	630	11.5	13.2	14.8	16.8	18.1	19.8	22.0	24.7	27.5	33.0	38.5	44.0	49.5	54.9	78.5	84.4
D	800	11.5	13.2	14.8	16.8	18.1	19.8	22.0	24.7	27.5	33.0	38.5	44.0	49.5	54.9	82.4	92.5



# Australia

📍 [nhp.com.au](http://nhp.com.au)

☎ 1300 NHP NHP

✉ [sales@nhp.com.au](mailto:sales@nhp.com.au)

**NHP ELECTRICAL ENGINEERING PRODUCTS**

ABN 84 004 304 812 © COPYRIGHT NHP 2021 | NHP19827 02/20



**SERVICE + SUPPORT**